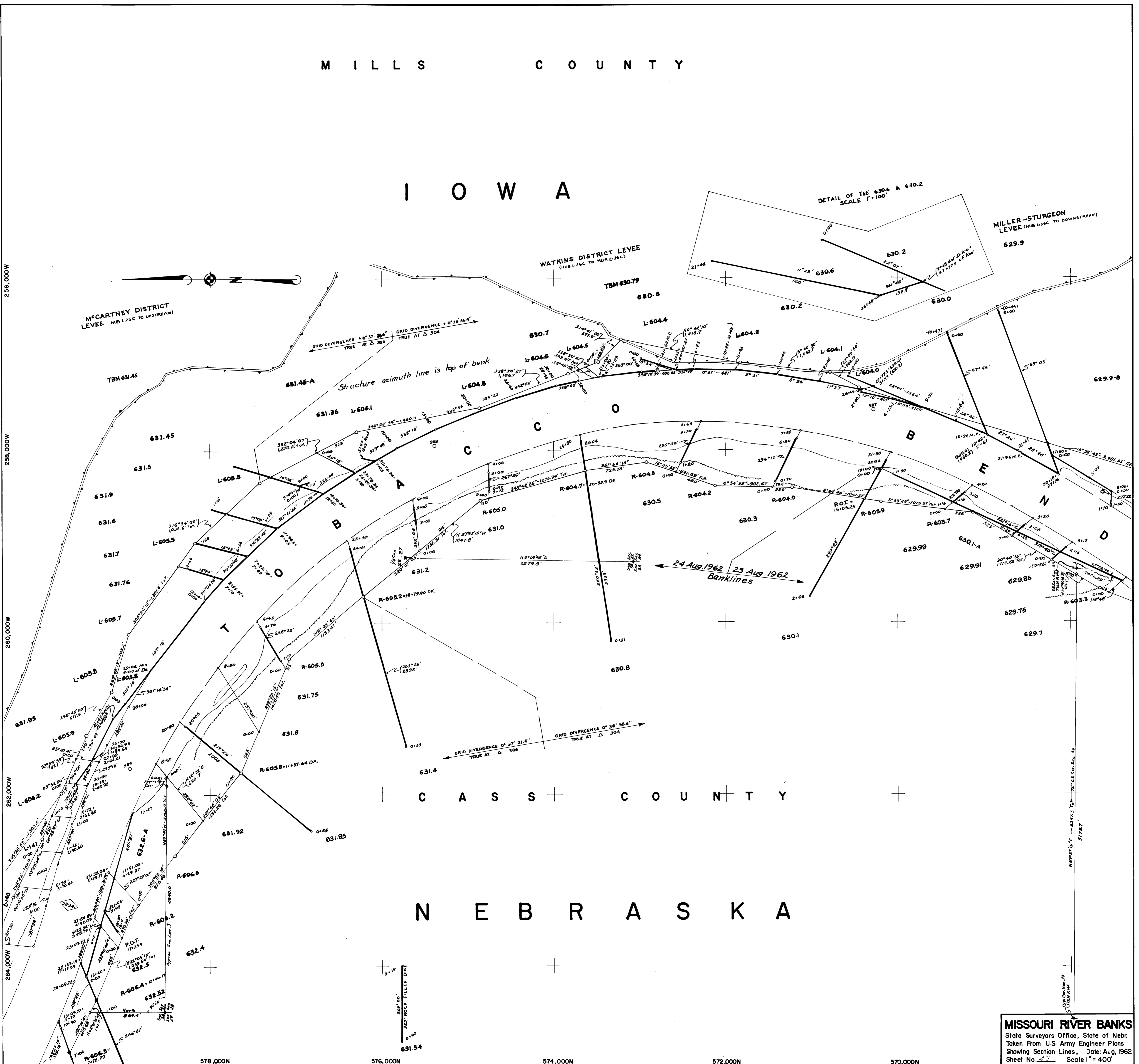


M I L L S C O U N T Y

I O W A

C A S S C O U N T Y

N E B R A S K A



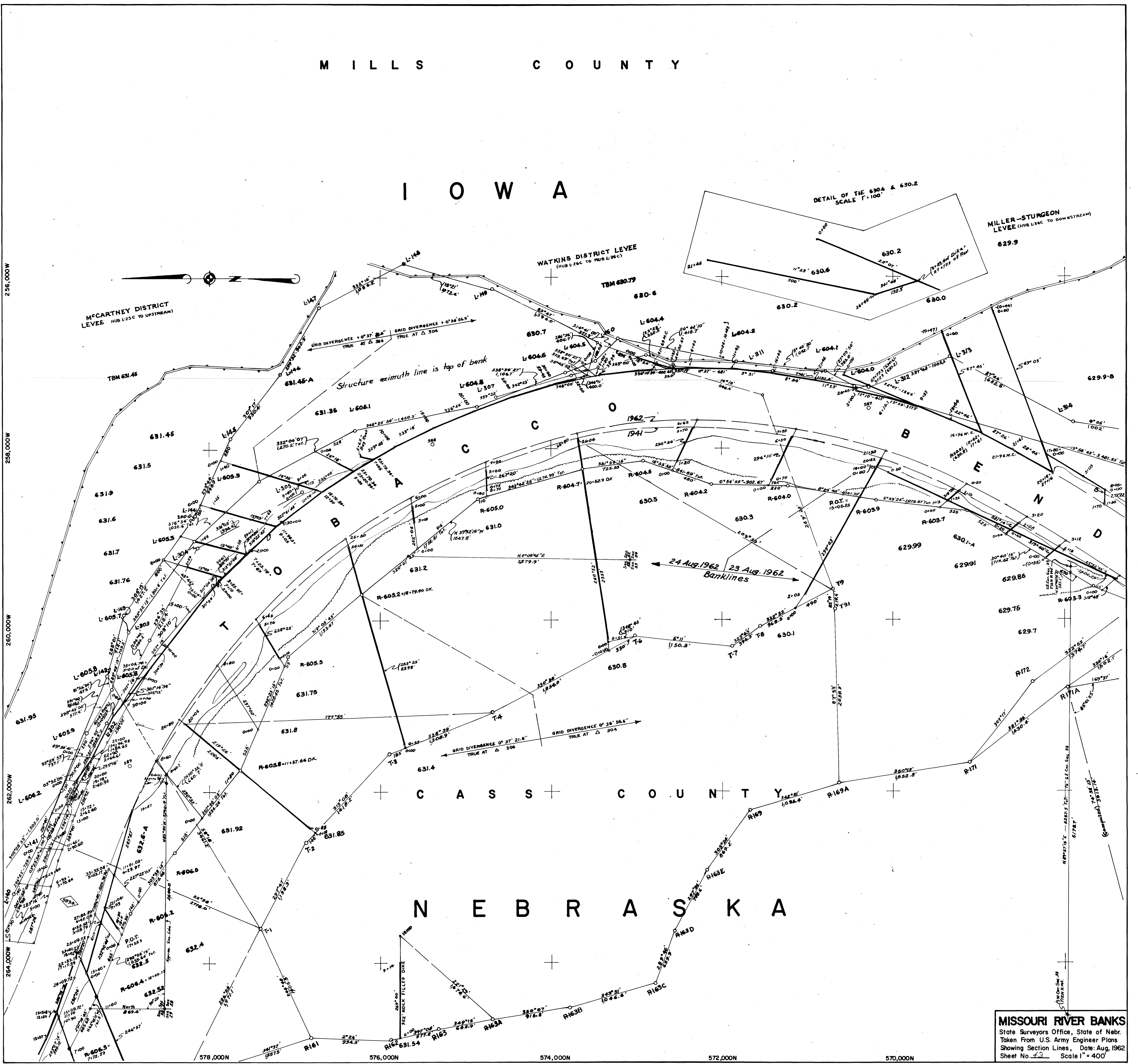
MISSOURI RIVER BANKS
 State Surveyors Office, State of Nebr.
 Taken From U.S. Army Engineer Plans
 Showing Section Lines, Date: Aug, 1962
 Sheet No. 22 Scale 1" = 400'

MILLS COUNTY

IOWA

CASS COUNTY

NEBRASKA



MISSOURI RIVER BANKS
 State Surveyors Office, State of Nebr.
 Taken From U.S. Army Engineer Plans
 Showing Section Lines, Date: Aug. 1962
 Sheet No. 23 Scale 1" = 400'

By
 J.F.
 OK.