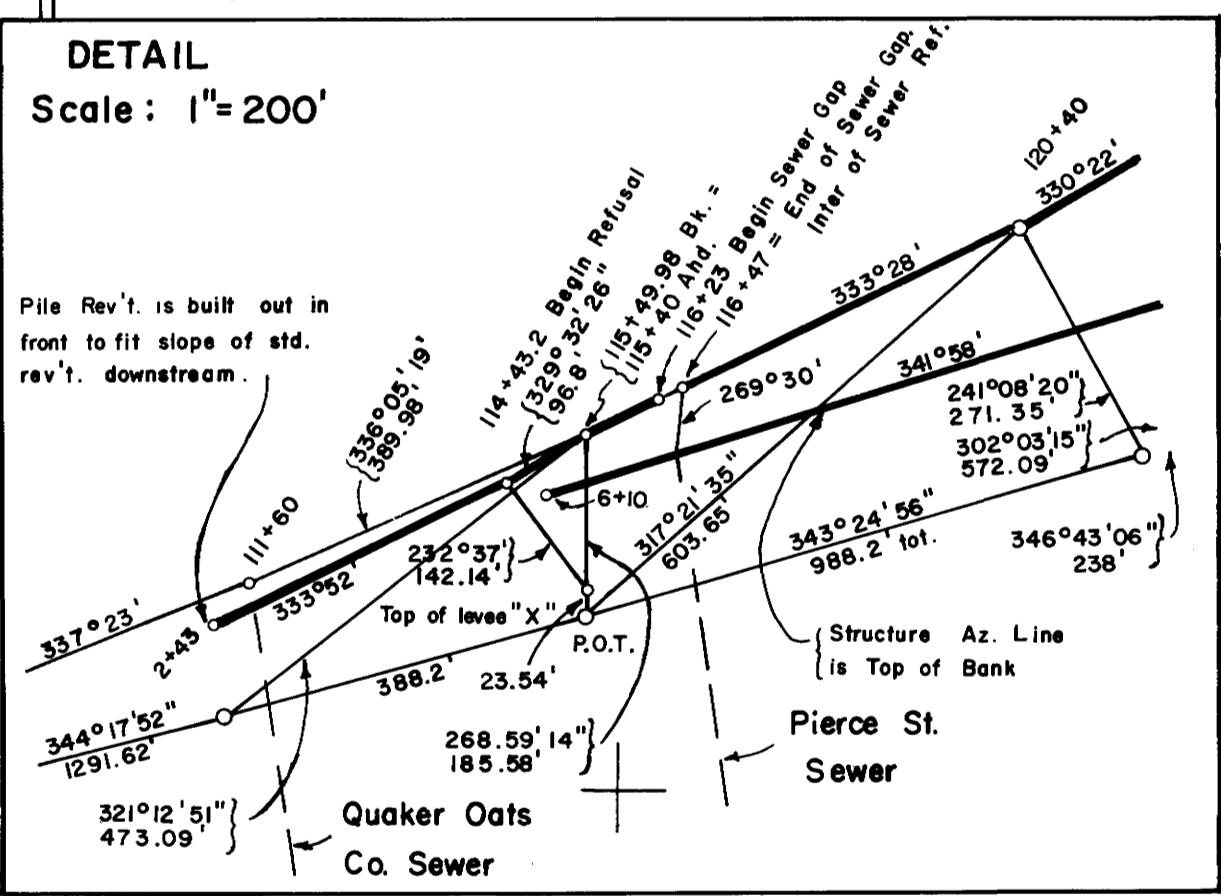
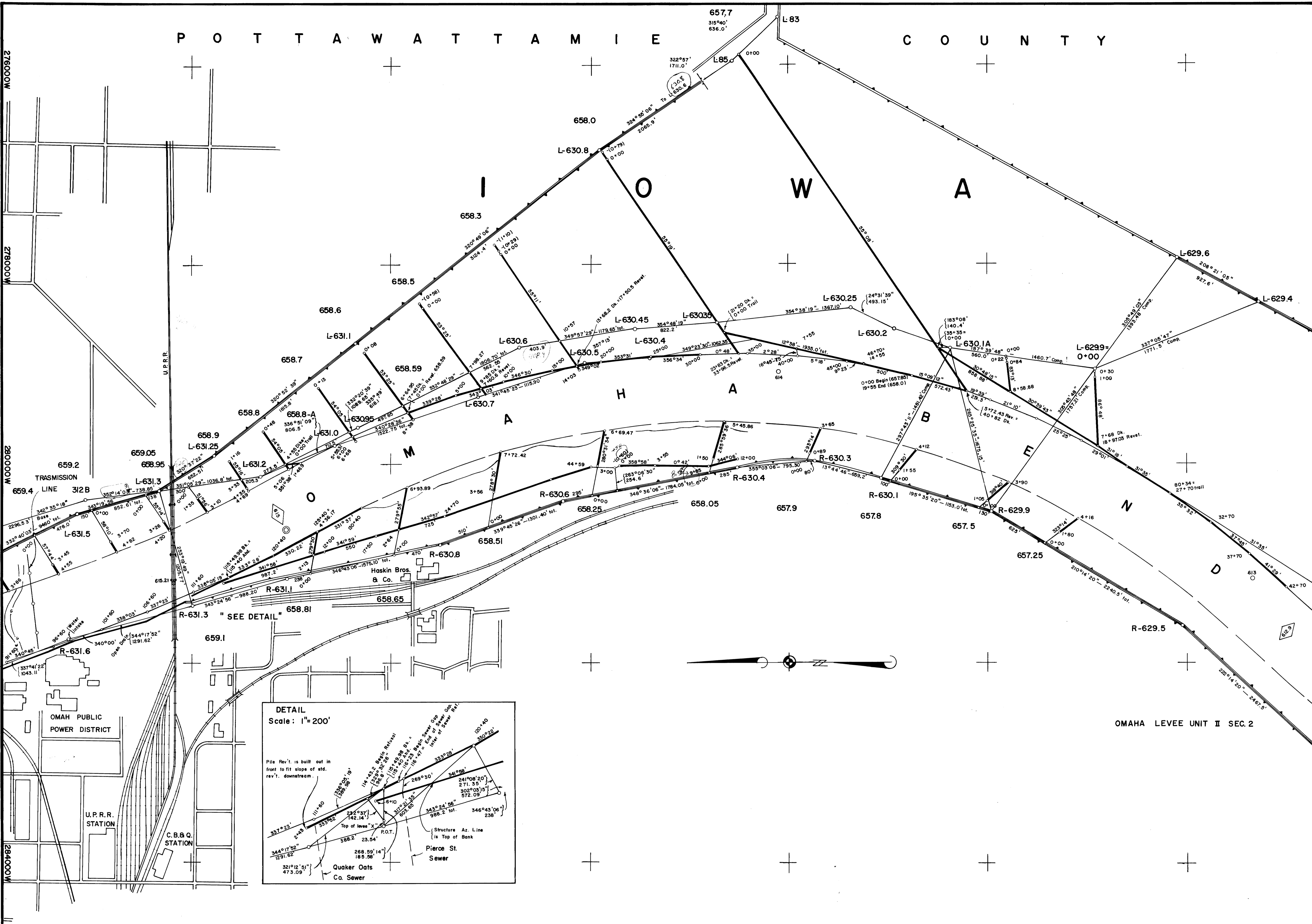


P O T T A W A T T A M I E C O U N T Y



D O U G L A S C O U N T Y

N E B R A S K A

674000 N

672000 N

670000 N

668000 N

666000 N

664000 N

**MISSOURI RIVER BANKS**  
 State Surveyors Office, State of Nebr.  
 Taken From U.S. Army Engineer Plans  
 Showing Section Lines, Date 8-1-62  
 Sheet No. 52 Scale 1"=400'