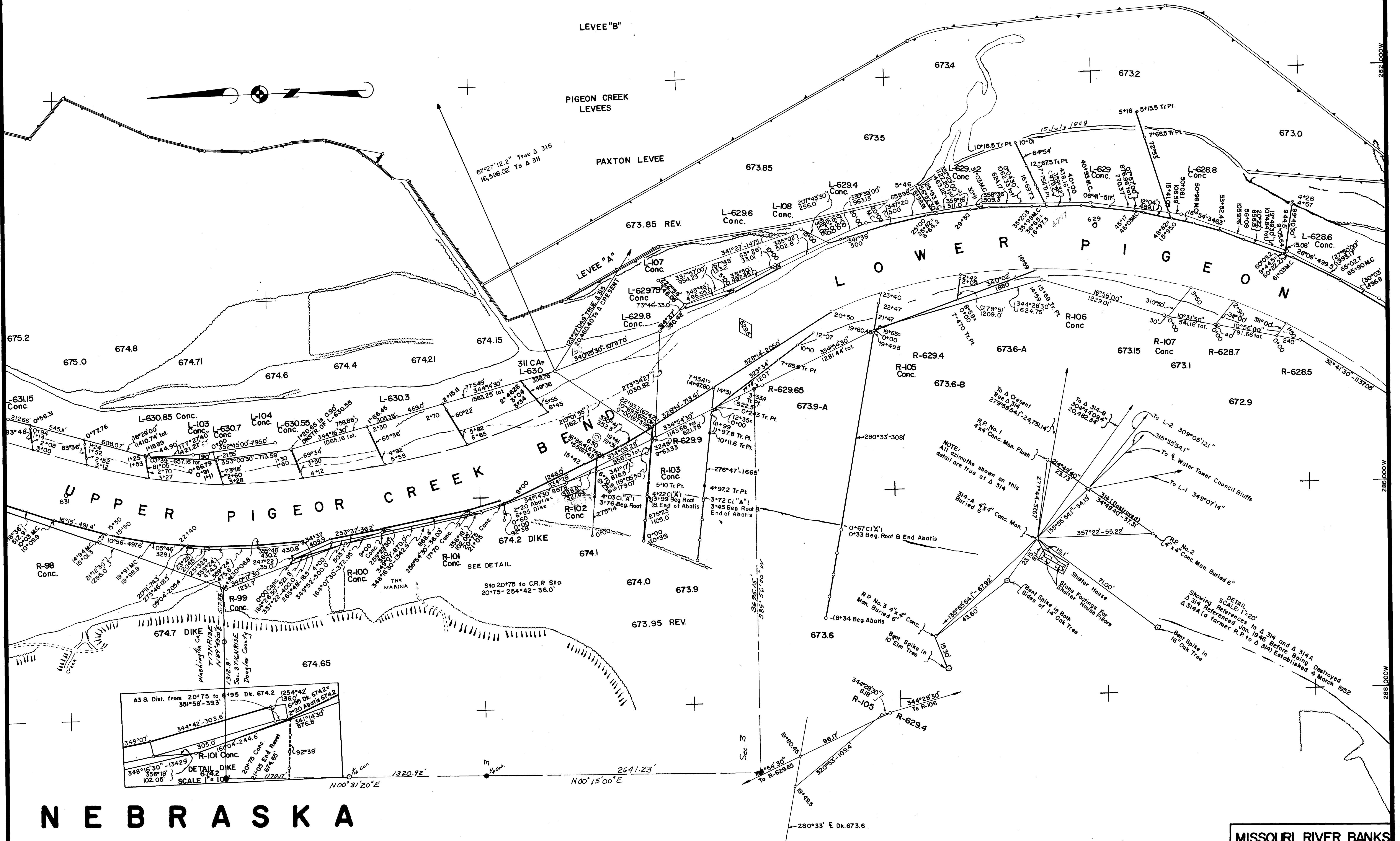


728 000N 726 000N 724 000N 722 000N 720 000N 718 000N 716 000N

I O W A

P O T T A W A T T A M I E C O U N T Y



N E B R A S K A

W A S H I N G T O N C O U N T Y

MISSOURI RIVER BANKS
 State Surveyors Office, State of Nebr.
 Taken From U.S. Army Engineer Plans.
 Showing Section Lines, Date: 4-1-65
 Sheet No. 40 Scale, 1" = 400'