

HARRISON COUNTY

IOWA

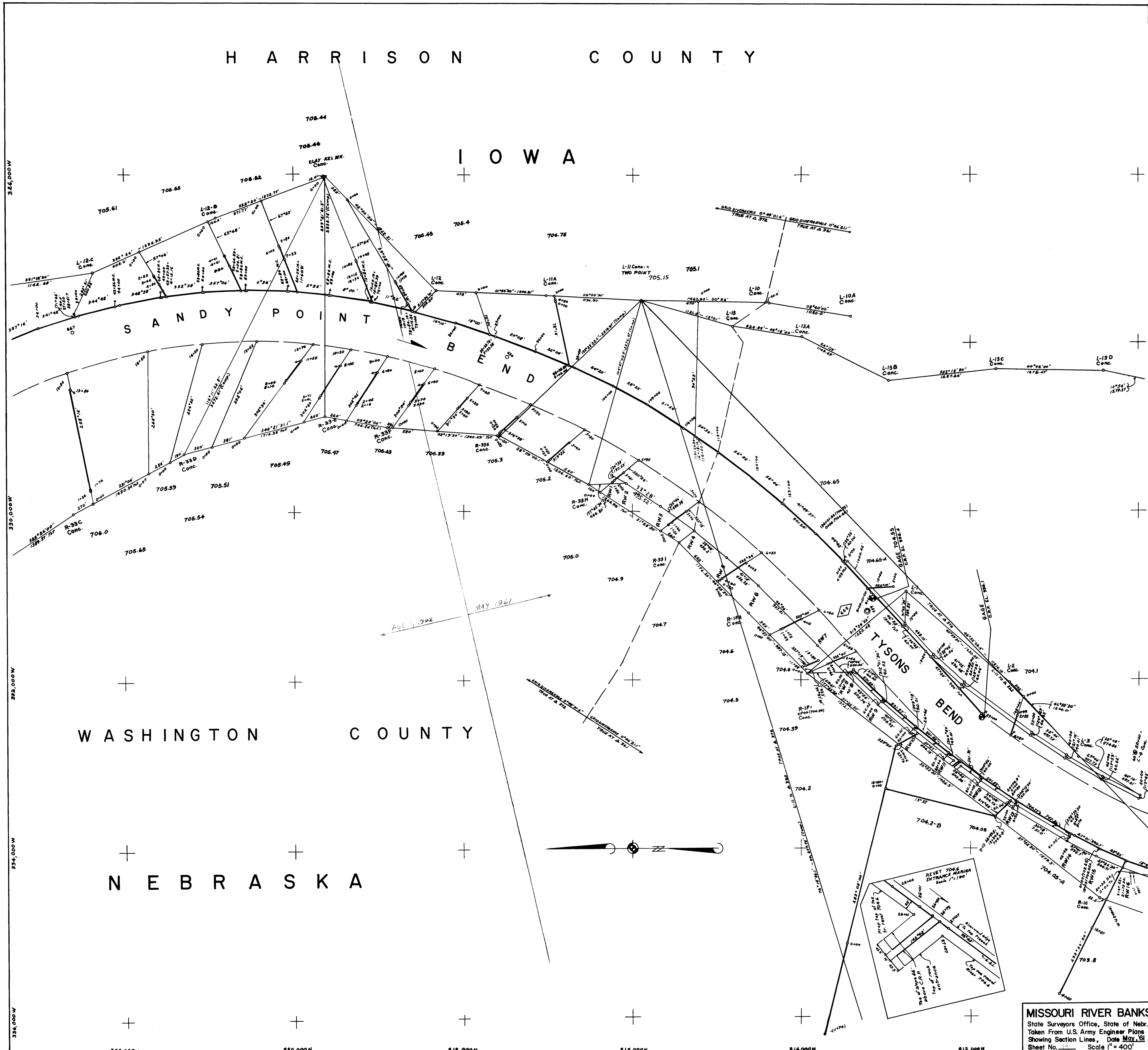
SANDY POINT

BEND

WASHINGTON COUNTY

TYSONS BEND

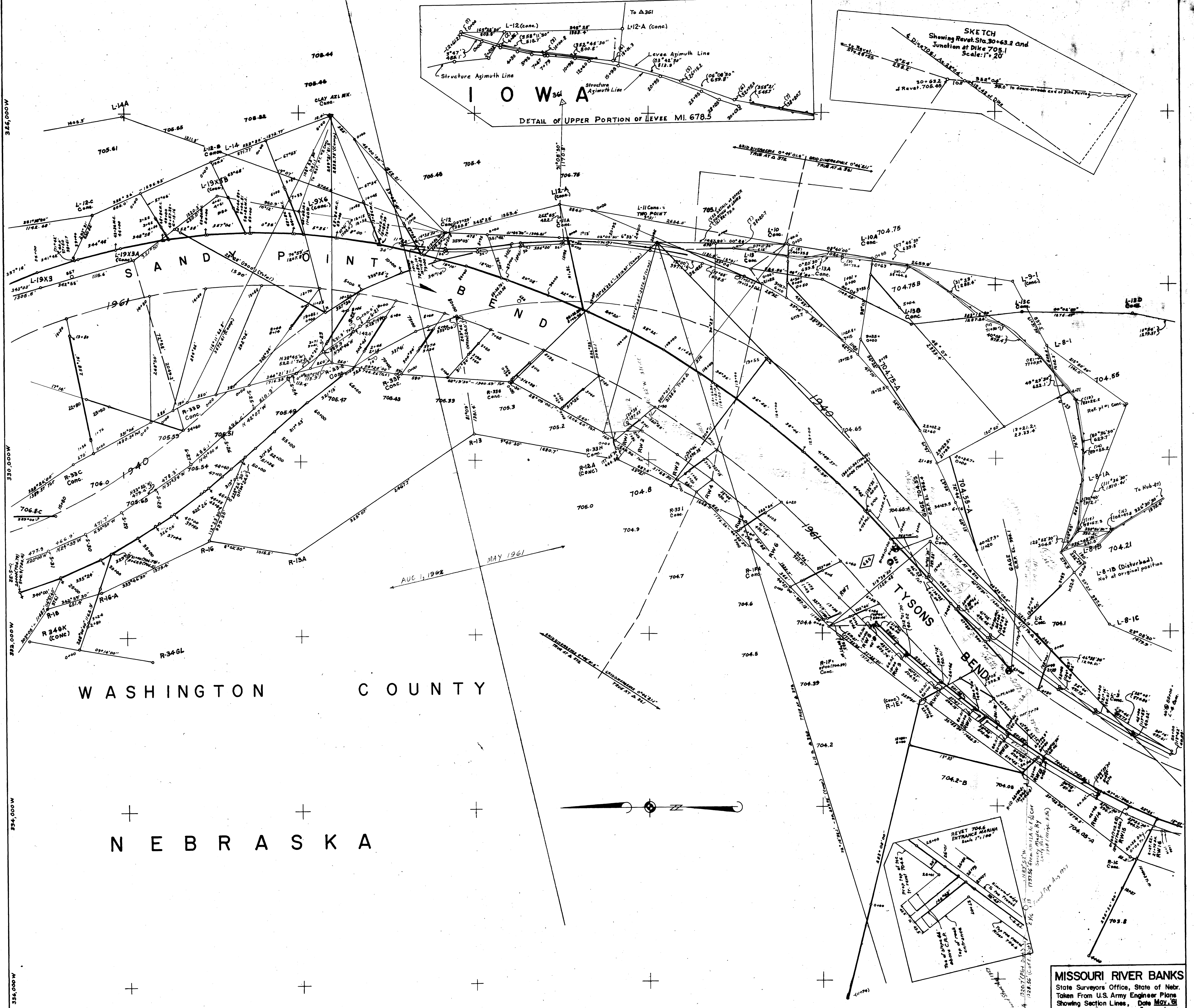
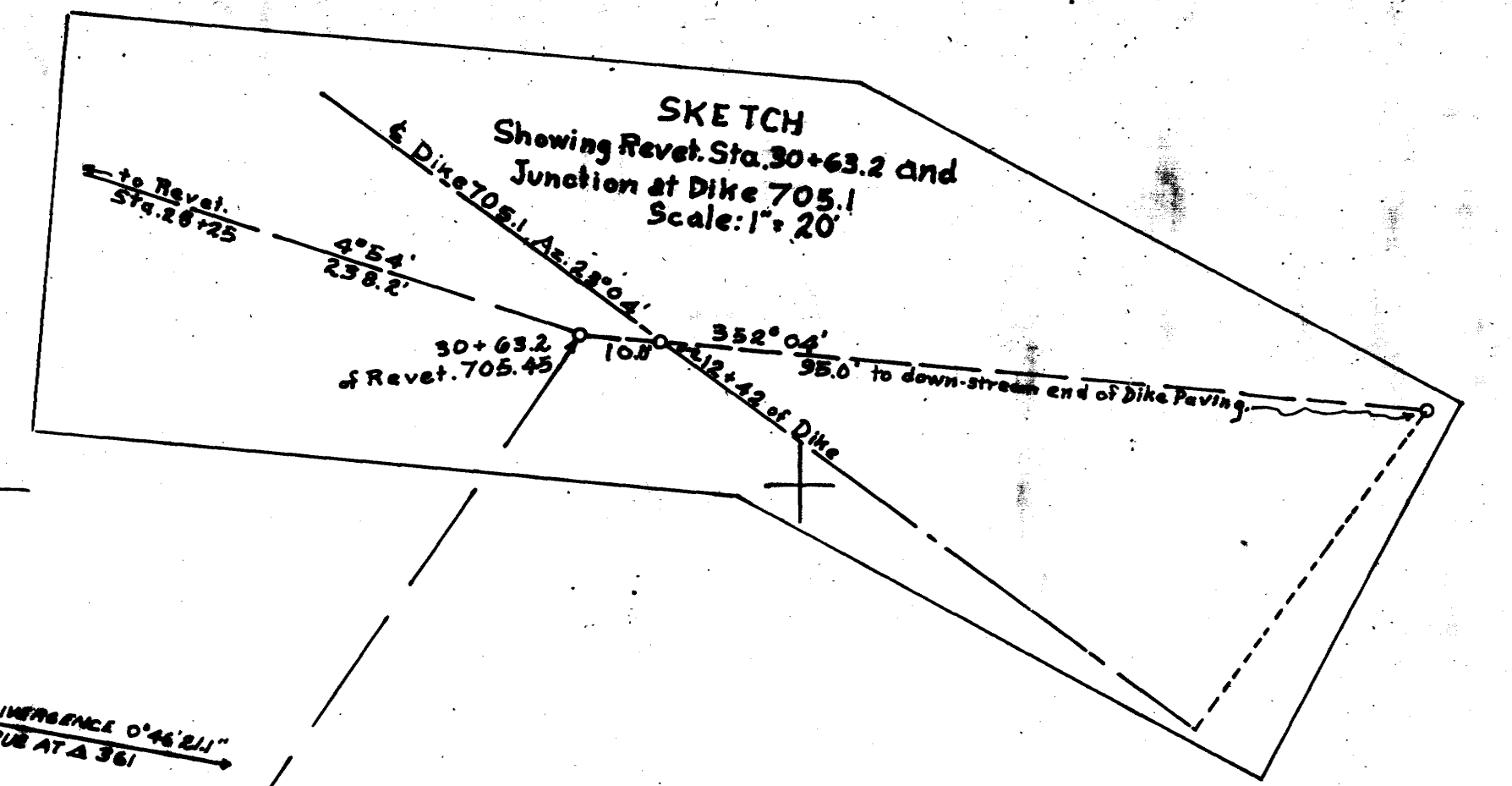
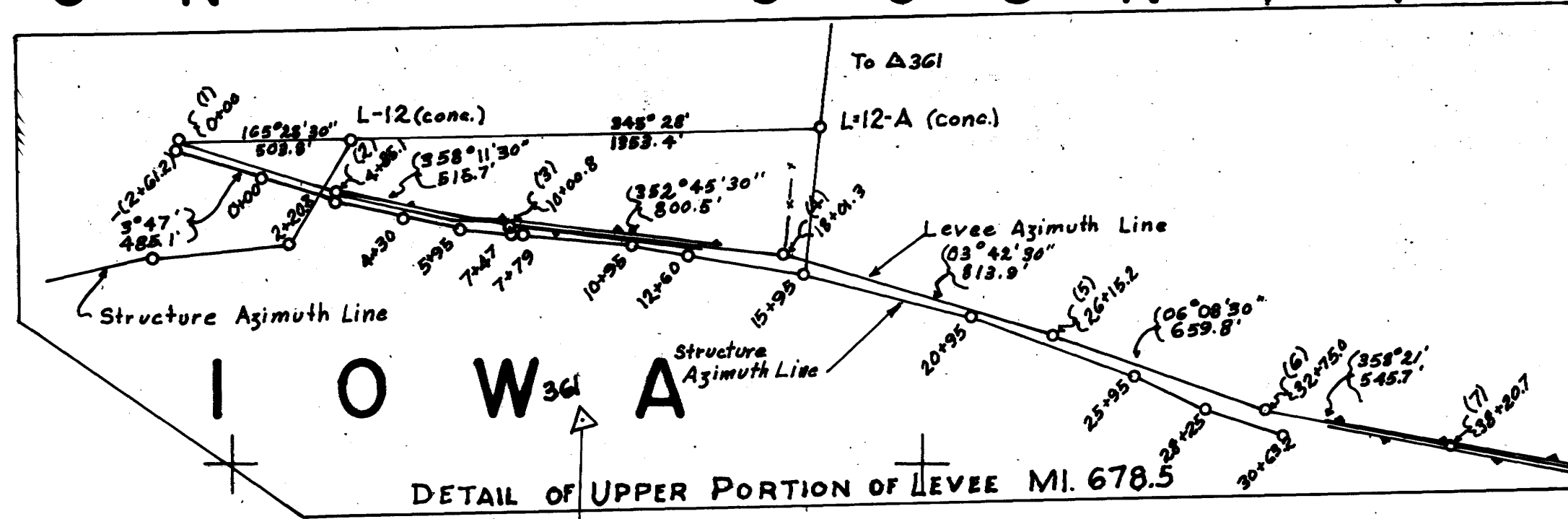
NEBRASKA



MISSOURI RIVER BANKS
 State Surveyors Office, State of Nebr.
 Taken From U.S. Army Engineer Plans
 Showing Section Lines, Date May, 61
 Sheet No. 12 Scale 1" = 400'

corrected L.B.

HARRISON COUNTY



WASHINGTON COUNTY

NEBRASKA

MISSOURI RIVER BANKS
 State Surveyors' Office, State of Nebr.
 Taken From U.S. Army Engineer Plans
 Showing Section Lines, Date May 61
 Sheet No. 1 Scale 1" = 400'