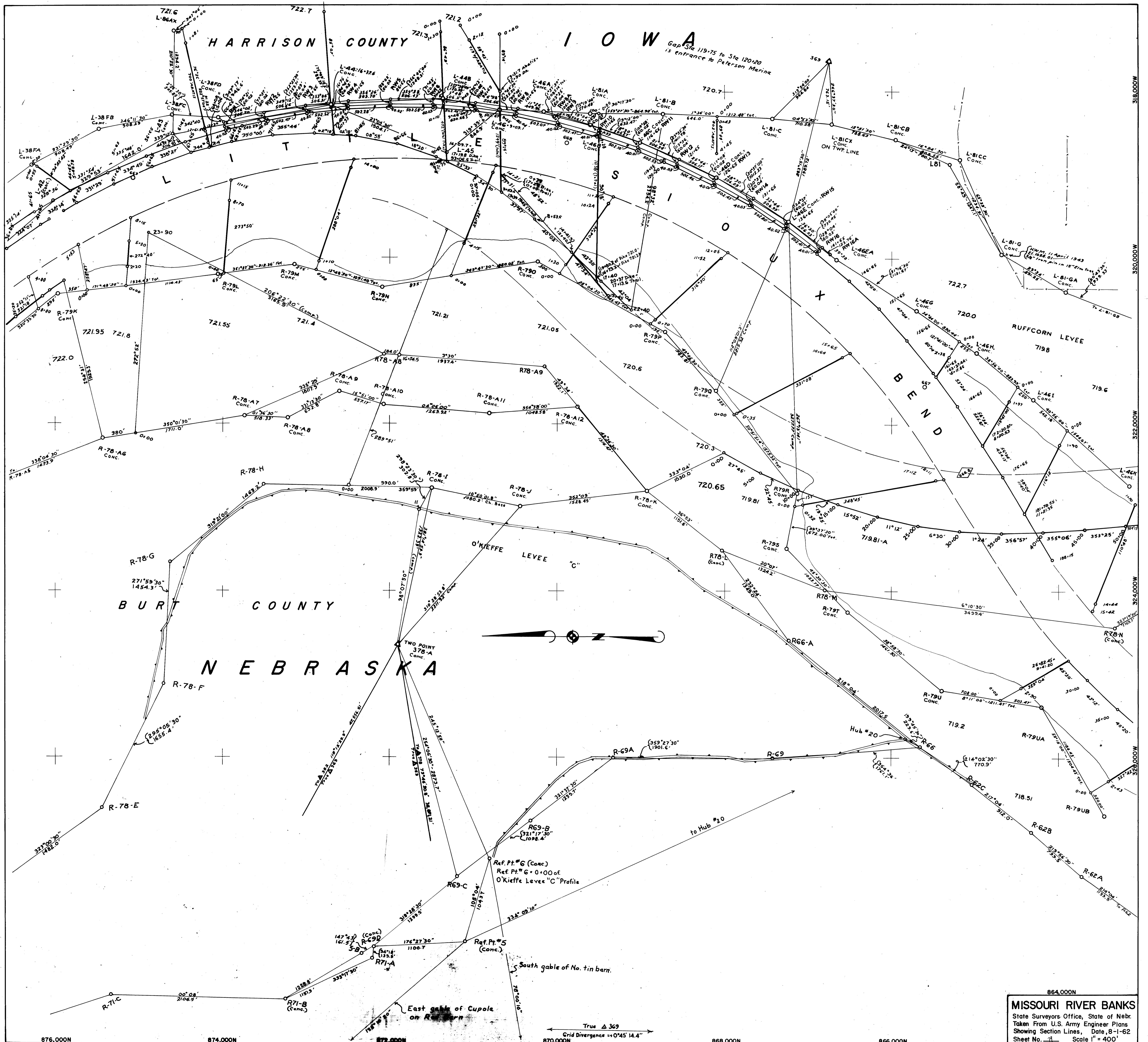


Gap Sta 119+75 to Sta 120+20
is entrance to Peterson Marina

864,000N
MISSOURI RIVER BANKS
 State Surveyors Office, State of Nebr.
 Taken From U.S. Army Engineer Plans
 Showing Section Lines, Date, 8-1-62
 Sheet No. 11 Scale 1" = 400'

63. at
 B.S.



864,000
MISSOURI RIVER BANKS
 State Surveyors Office, State of Nebr.
 Taken From U.S. Army Engineer Plans
 Showing Section Lines, Date 8-1-62
 Sheet No. 11 Scale 1" = 400'

1940
 G.S.
 corrected L.B.
 V.S.
 B.S.