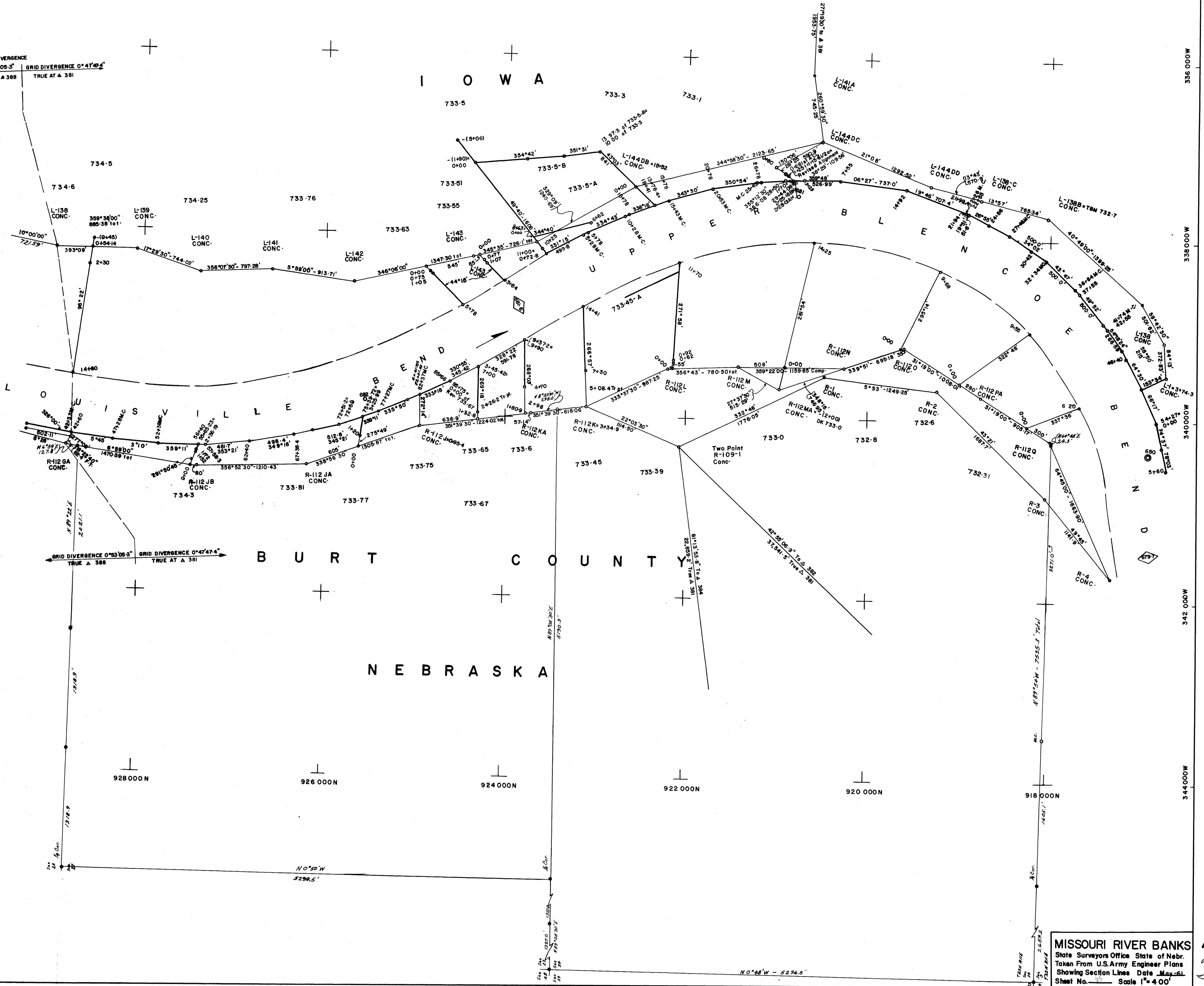




M O N O N A C O U N T Y

I O W A

GRID DIVERGENCE  
0° 53' 06.3" TRUE AT Δ 388  
GRID DIVERGENCE 0° 47' 47.4" TRUE AT Δ 381



GRID DIVERGENCE 0° 53' 06.3" TRUE AT Δ 388  
GRID DIVERGENCE 0° 47' 47.4" TRUE AT Δ 381

B U R T C O U N T Y

N E B R A S K A

928 000N

926 000N

924 000N

922 000N

920 000N

918 000N

338 000W

338 000W

340 000W

342 000W

344 000W

MISSOURI RIVER BANKS  
State Surveyors Office State of Nebr.  
Taken From U.S. Army Engineer Plans  
Showing Section Lines Date May-61  
Sheet No. 10 Scale 1"=400'

Handwritten initials and a checkmark.