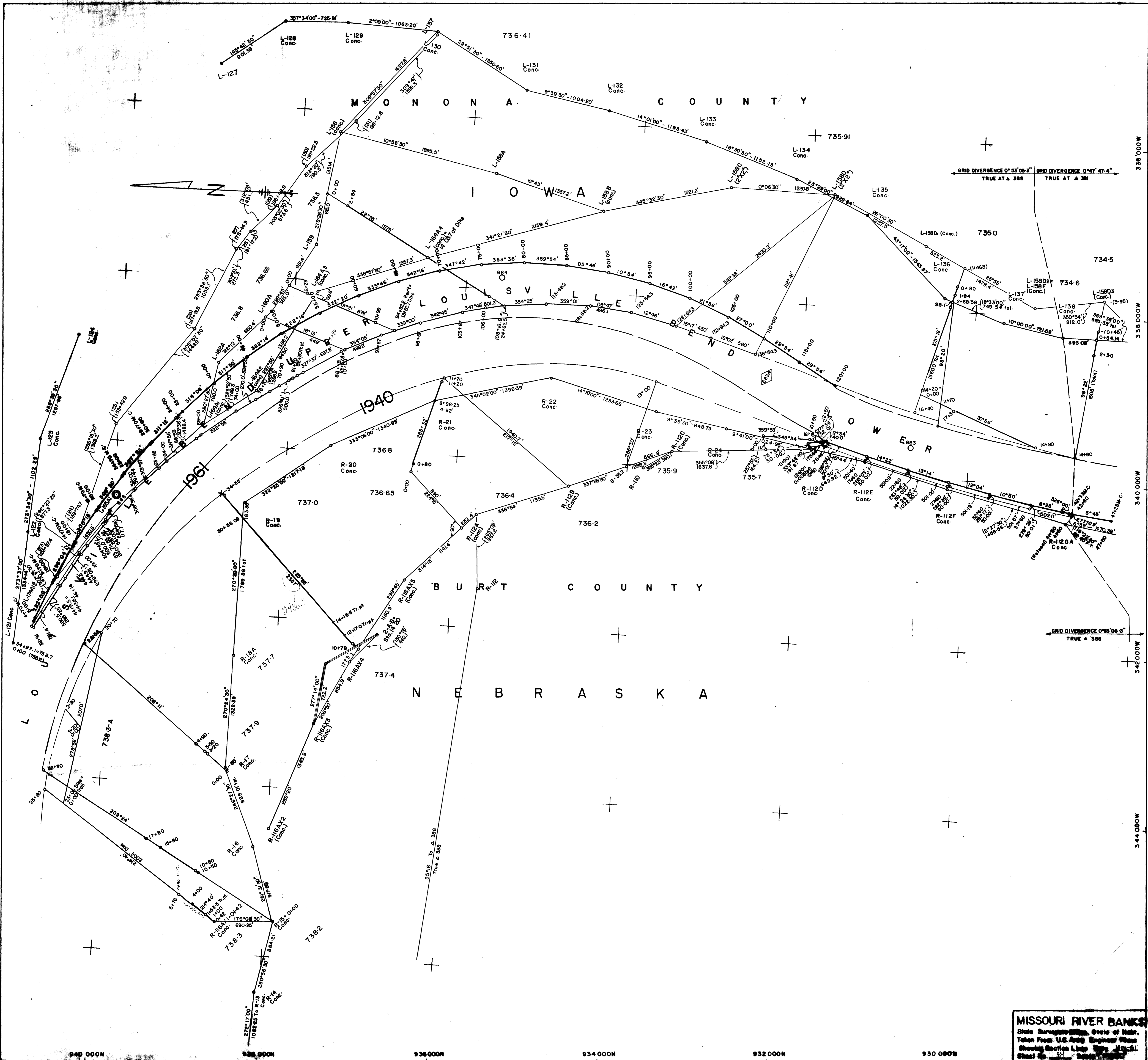


MISSOURI RIVER BANKS
 State Surveyors Office, State of Nebr.,
 Taken From U.S. Army Engineer Plans
 Showing Section Lines Date May-61
 Sheet No. 41 Scale $1" = 400'$



MISSOURI RIVER BANKS
 State Survey, State of Neb.,
 Taken From U.S. Army Engineer Plans
 Showing Section Lines, etc., No. 51
 Sheet No. 34

W.B.
R.D.
11/10/80

connected
W.B.