

360,000

366,000 W

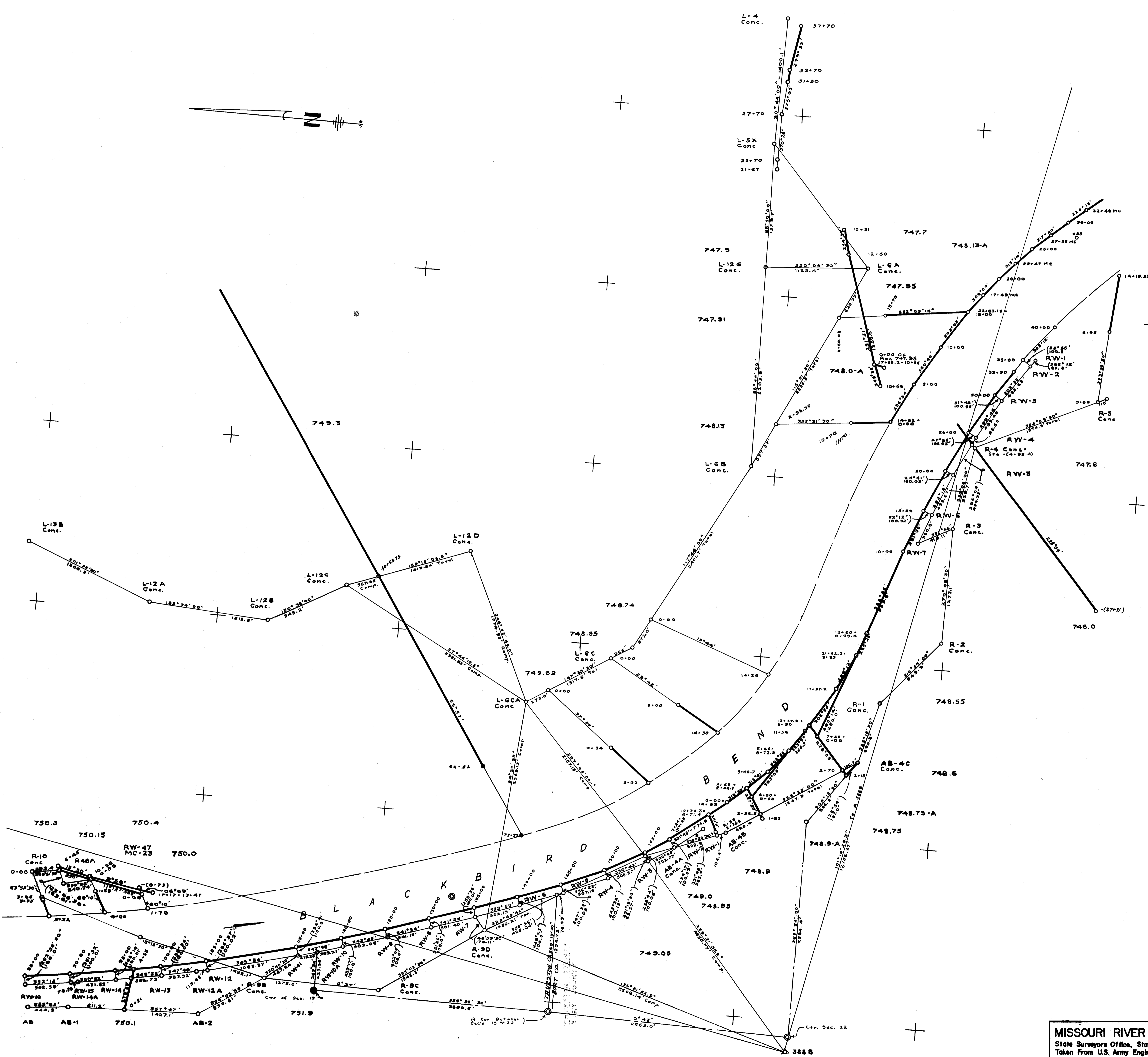
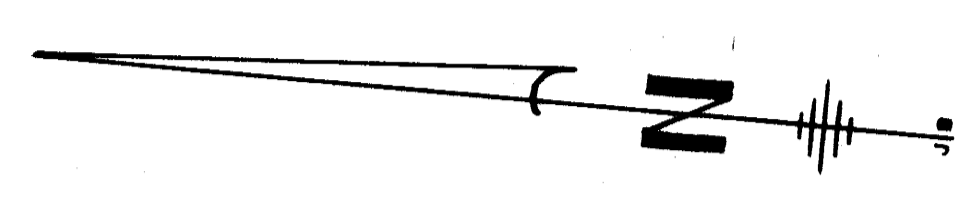
366,000 W

370,000 W

372,000 W

374,000 W

374,000 W



MISSOURI RIVER BANKS
State Surveyors Office, State of Nebr.
Taken From U.S. Army Engineer Plans
Showing Section Lines, Date Mar-6
Sheet No. 21 Scale 1" = 400'

372,000 N 370,000 N 368,000 N 366,000 N 364,000 N 362,000 N

