

W O O D B U R Y C O U N T Y

I O W A

L O W E R D A K O T A

B E N D

M O

D I

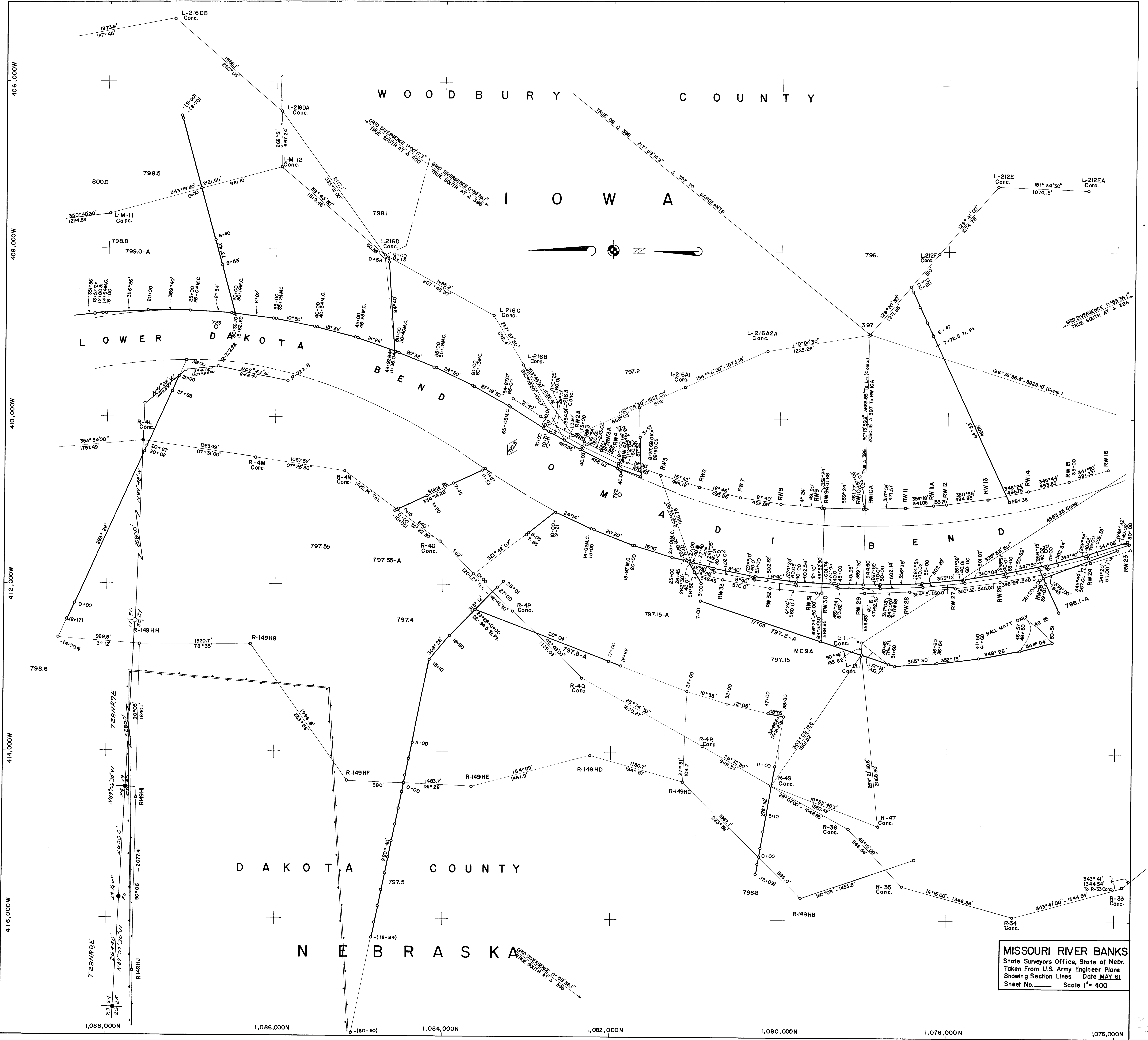
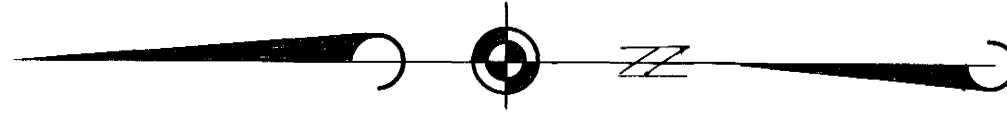
B E N D

D A K O T A C O U N T Y

N E B R A S K A

GRID DIVERGENCE 0° 59' 56.1" TRUE SOUTH AT Δ 396

MISSOURI RIVER BANKS
State Surveyors Office, State of Nebr.
Taken From U.S. Army Engineer Plans
Showing Section Lines Date MAY 61
Sheet No. _____ Scale 1" = 400



406.0000W
408.0000W
410.0000W
412.0000W
414.0000W
416.0000W

1,088,000N
1,086,000N
1,084,000N
1,082,000N
1,080,000N
1,078,000N
1,076,000N

W O O D B U R Y C O U N T Y

I O W A

L O W E R D A K O T A

B E N D

1961

1940

MC 9A

D A K O T A C O U N T Y

N E B R A S K A

GRID DIVERGENCE 0° 53' 36.1" TRUE SOUTH AT A 396

GRID DIVERGENCE 1° 00' 17.3" TRUE SOUTH AT A 400

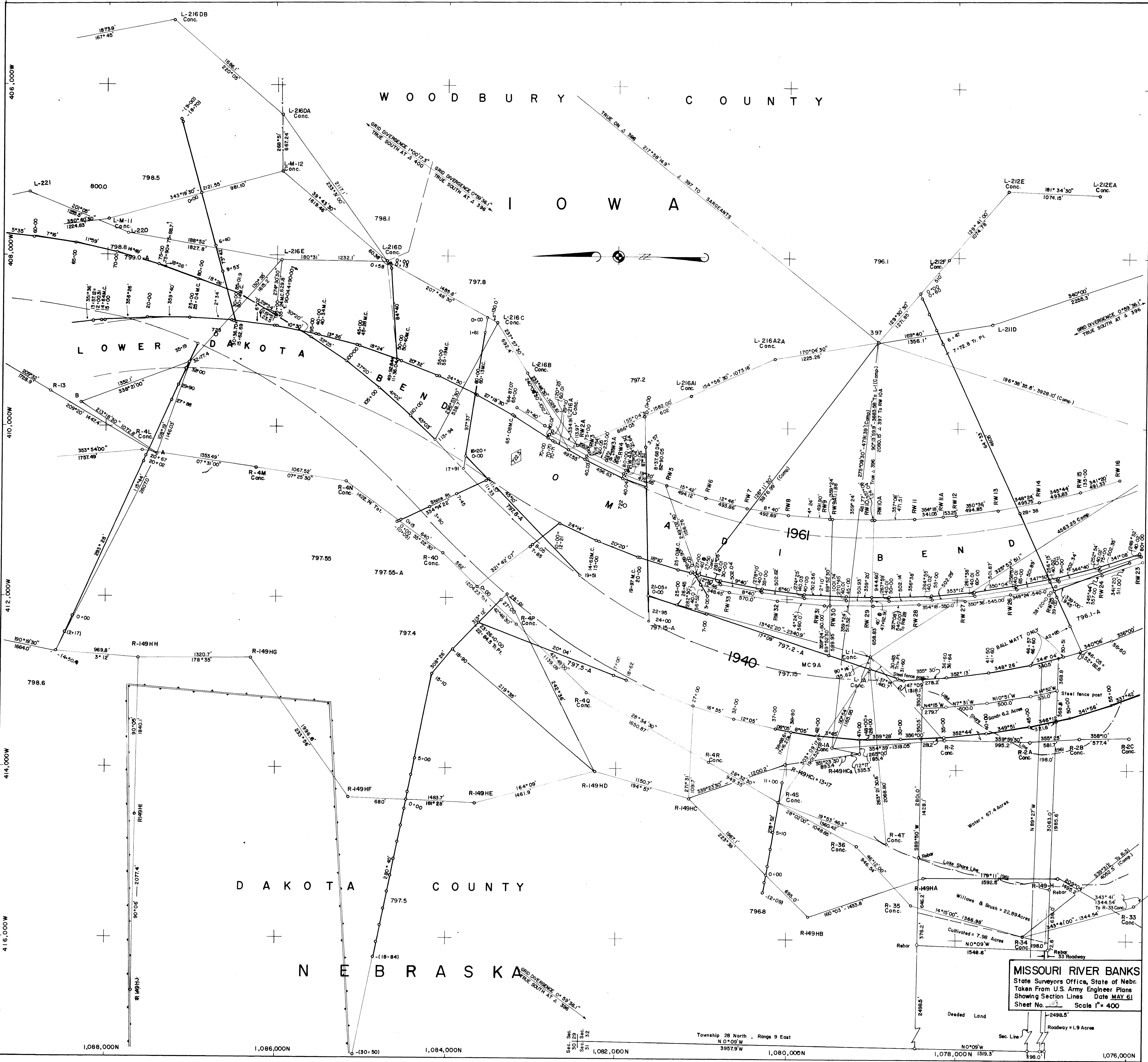
TRUE ON A 396 217° 58' 14.9" A 397 TO SARGENTS

GRID DIVERGENCE 0° 58' 36.1" TRUE SOUTH AT A 396

MISSOURI RIVER BANKS
State Surveyors Office, State of Nebr.
Taken From U.S. Army Engineer Plans
Showing Section Lines Date MAY 61
Sheet No. 19 Scale 1" = 400

Township 28 North, Range 9 East
N 0° 09' W
39579 W

Deeded Land
Roadway = 1.9 Acres



406.0000W
408.0000W
410.0000W
412.0000W
414.0000W
416.0000W

1,088,000N
1,086,000N
1,084,000N
1,082,000N
1,080,000N
1,078,000N
1,076,000N

1,088,000N

1,085,000N

1,082,000N

1,082,000N

1,080,000N

1,078,000N

1,076,000N

103-A

