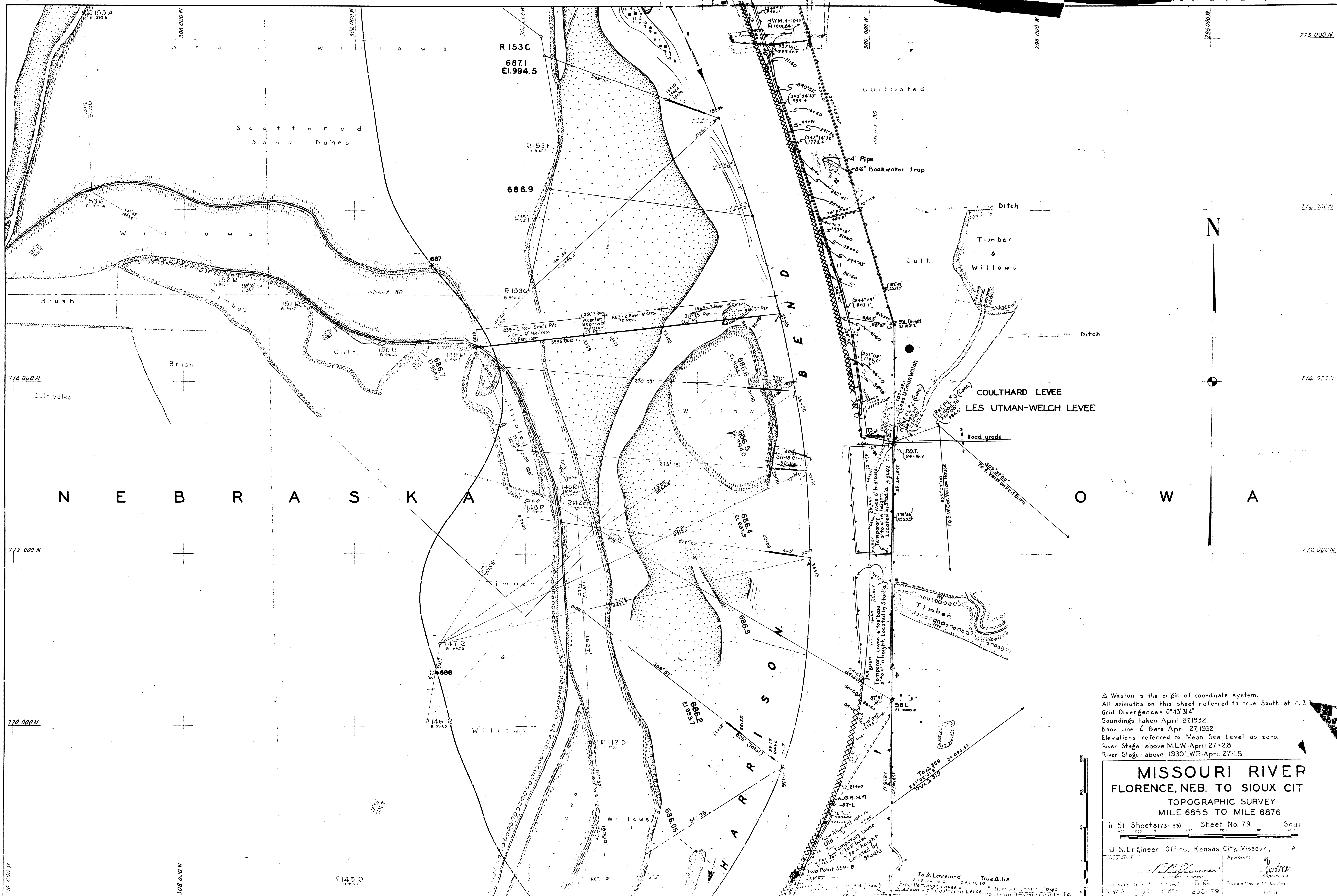


WAR DEPARTMENT

ENGINEERS.



Δ Weston is the origin of coordinate system.
 All azimuths on this sheet referred to true South at $\Delta 3$
 Grid Divergence $0^{\circ}43'31''$
 Soundings taken April 27, 1932.
 Bank Line 4 Bars April 27, 1932.
 Elevations referred to Mean Sea Level as zero.
 River Stage - above M.L.W. April 27-28
 River Stage - above 1930 L.W.P. April 27-15

MISSOURI RIVER

FLORENCE, NEB. TO SIOUX CIT

TOPOGRAPHIC SURVEY

MILE 685.5 TO MILE 687.6

1: 51 Sheets (173-123) Sheet No. 79 Scale
 1" = 1000'

U. S. Engineer Office, Kansas City, Missouri, A
 Approved: *[Signature]*
 Checked: *[Signature]*
 IN W.A. T.U.H. REPT. 233-79

8600