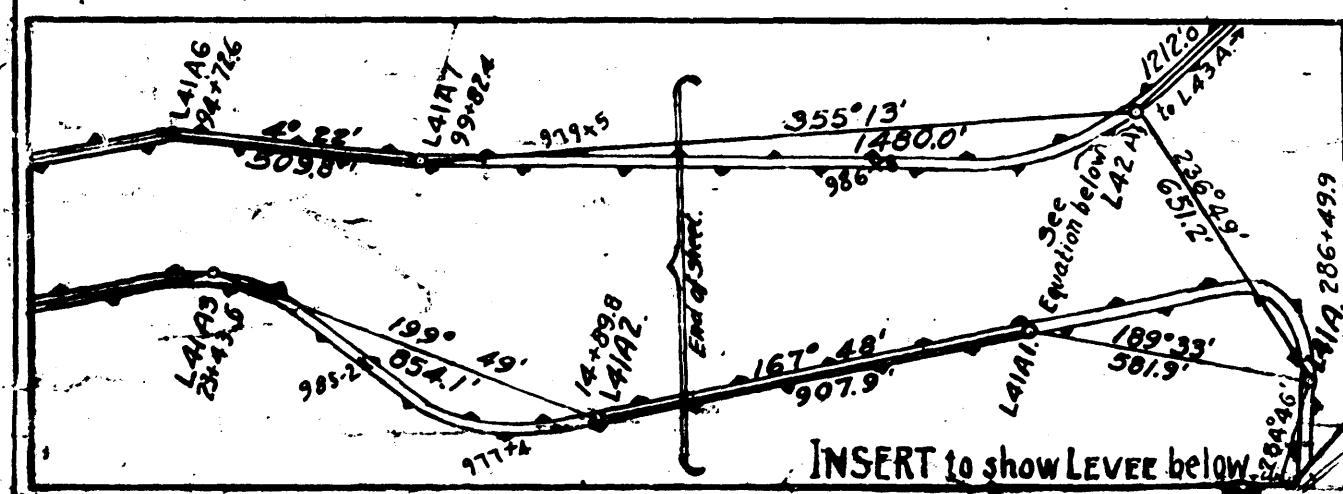


I O W A

POTTAWATTAMIE COUNTY LEVEE

PIGEON CREEK SUB. DISTRICT NO. 1 LEVEE

EAST OMAHA LEVEE DISTRICT



Δ W 1000 is the origin of coordinate system.
 All azimuths of this sheet referred to true South of Δ COUNCIL
 Grid divergence = 37° 00.6'
 Soundings taken Sept 25 and 26, 1931.
 Banklines & Bars taken Sept 25 and 26, 1931.
 Elevations referred to Mean Sea Level as zero.
 River stage - Sept 25-26 above M.L.W. Sept 26-27 below M.L.W.
 River stage - Sept 27-30 above 1930 L.W.P., Sept 26-27 below 1930 L.W.P.

MISSOURI RIVER
 ST. JOSEPH, MO. TO FLORENCE, NEB.
 TOPOGRAPHIC SURVEY
 MILE 662.9 TO MILE 666.7
 In 72 Sheets Sheet No. 73

U.S. Engineer Office, Kansas City, Missouri

187-10000