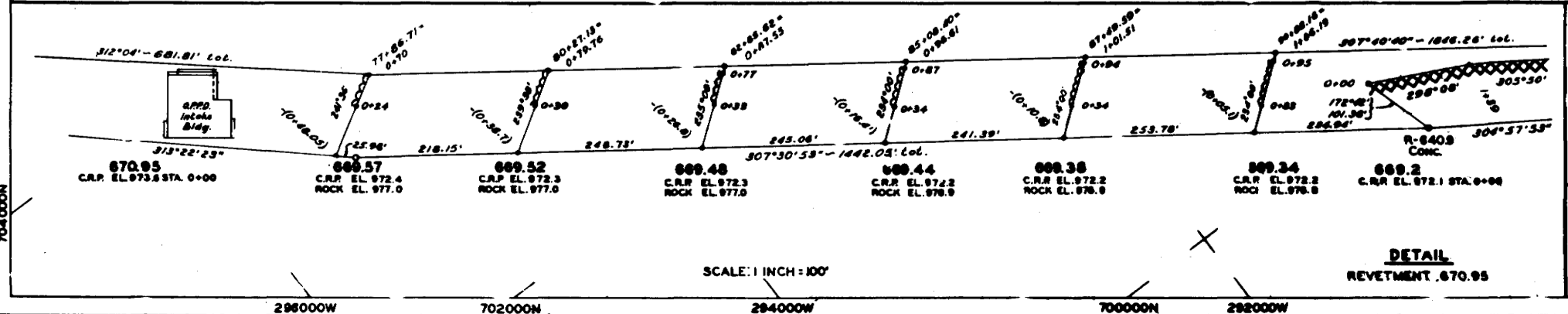
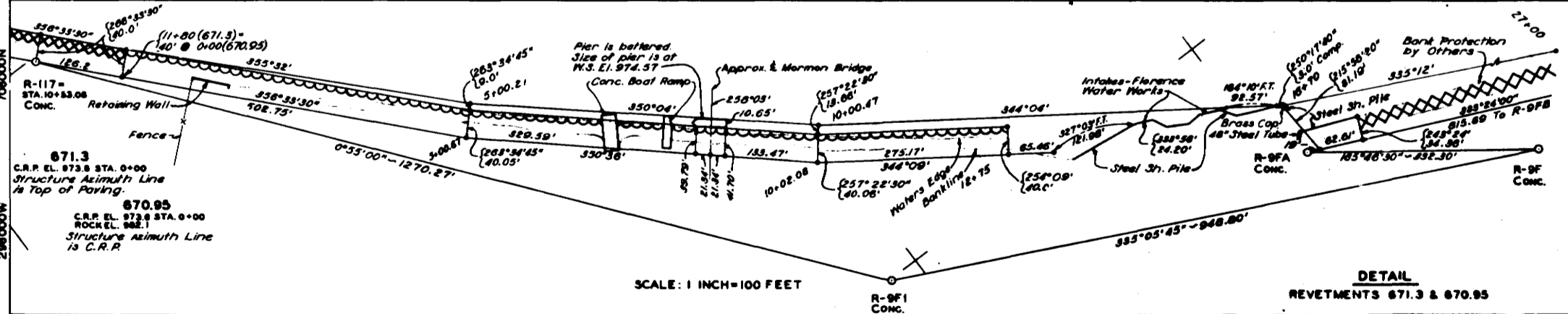
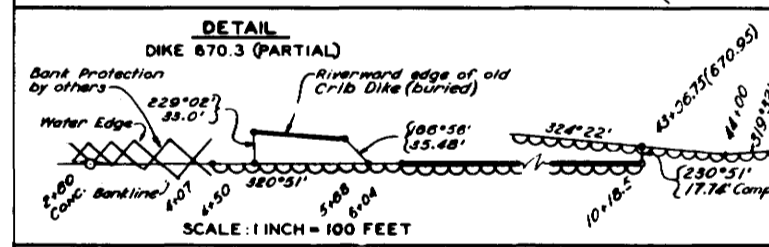


P O T T A W A T T A M I E C O U N T Y
I O W A

D O U G L A S C O U N T Y
N E B R A S K A

Bank lines
22 Oct 1968



GAGE DATA

Location	Reading	Discharge	C.R.P.	Date
Omaha	7.0	34,000	-1.0	22 Oct '68

Note:
All soundings are depths in feet below C.R.P.
(Design flow of 30,000 c.f.s. at Sioux City.)

NOTES:

WESTON IS THIS ORIGIN OF THE GRID COORDINATE SYSTEM
ALL BEARINGS ON THIS SHEET REFER TO TRUE SOUTH AT Δ312
GRID DIVERGENCE 6°40'41.8"
ELEVATIONS REFER TO MEAN SEA LEVEL AS ZERO
0 1000 ADJUSTED MILEAGE
1000 MILEAGE SHOWN IN TITLE
MAY BE MADE CHANGE

SCALE 1 INCH = 400 FEET

THIS DRAWING HAS BEEN REDUCED TO
ONE-HALF THE ORIGINAL SCALE.

1-9-65	Revised to show latest field data	MADE	APPR'D
REVISIONS			
U. S. ARMY ENGINEER DISTRICT OMAHA CORPS OF ENGINEERS OMAHA NEBRASKA			
COMPILED BY M.E.B.		MISSOURI RIVER	
DRAWN BY C.H.H.		HYDROGRAPHIC SURVEY	
TRACED BY F.T.V.		STRUCTURE 671.36 TO 668.11	
CHECKED BY G.C.S.		FLORENCE BEND	
SUBMITTED BY H.C. Thompson		DATE 22 OCT. 1968	
APPROVED BY Chief Engineer		APPROVED BY [Signature]	
SCALE: AS SHOWN		DRAWING NUMBER MCC-18E68-42	
COL. C.E. DISTRICT ENGINEER			