

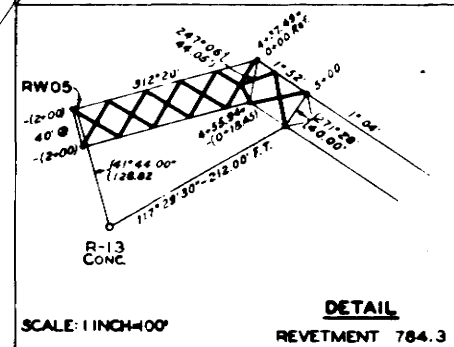
GAGE DATA

Location	Reading	Discharge	C.R.P.	Date
Sioux City	3.6	33,000	-0.4	17 Sep '68
Sioux City	3.2	31,500	-0.8	19 Sep '68

Note
All soundings are depths in feet below C.R.P.
(Design flow of 30,000 c.f.s. at Sioux City.)

Note: H.S. Rain Std
Revet. Sta
(0+02) to 1+43
786.4

Note: Hub R-K-36
offset Sta (0+00)
Revet. 785.0



NOTES:
 Δ WESTON IS THE ORIGIN OF THE GRID COORDINATE SYSTEM
 ALL AZIMUTHS ON THIS SHEET REFER TO TRUE SOUTH AT Δ AS SHOWN
 GRID DIVERGENCE AS SHOWN
 ELEVATIONS REFER TO MEAN SEA LEVEL AS ZERO
 ○ 1960 ADJUSTED MEASUREMENT
 1968 MEASUREMENT SHOWN IN TITLE
 ◊ BEND CHANGE

Revised to show latest field data		DATE	BY	APPROVED
U. S. ARMY ENGINEER DISTRICT, OMAHA CORPS OF ENGINEERS OMAHA, NEBRASKA				
COMPILED BY: A. J. P.	MISSOURI RIVER			
DRAWN BY: A. J. P.	HYDROGRAPHIC SURVEY			
TRACED BY: A. J. P.	STRUCTURE 788.7 TO 782.75			
CHECKED BY: G. C. S.	BROWERS AND SNYDERS BENDS			
SUBMITTED BY: <i>W. J. Chastain</i>	APPROVED: <i>Charles H. King</i>	DATE:	17 & 19 SEPT. 1968	
CHIEF, CHANNEL STABIL. SEC.	ENGINEERING DIVISION			
APPROVED: <i>W. J. Chastain</i>		SCALE 1 INCH = 400 FEET		
DRAWING NUMBER		MCC-18E68-78		

THIS DRAWING HAS BEEN REDUCED TO ONE-HALF THE ORIGINAL SCALE.