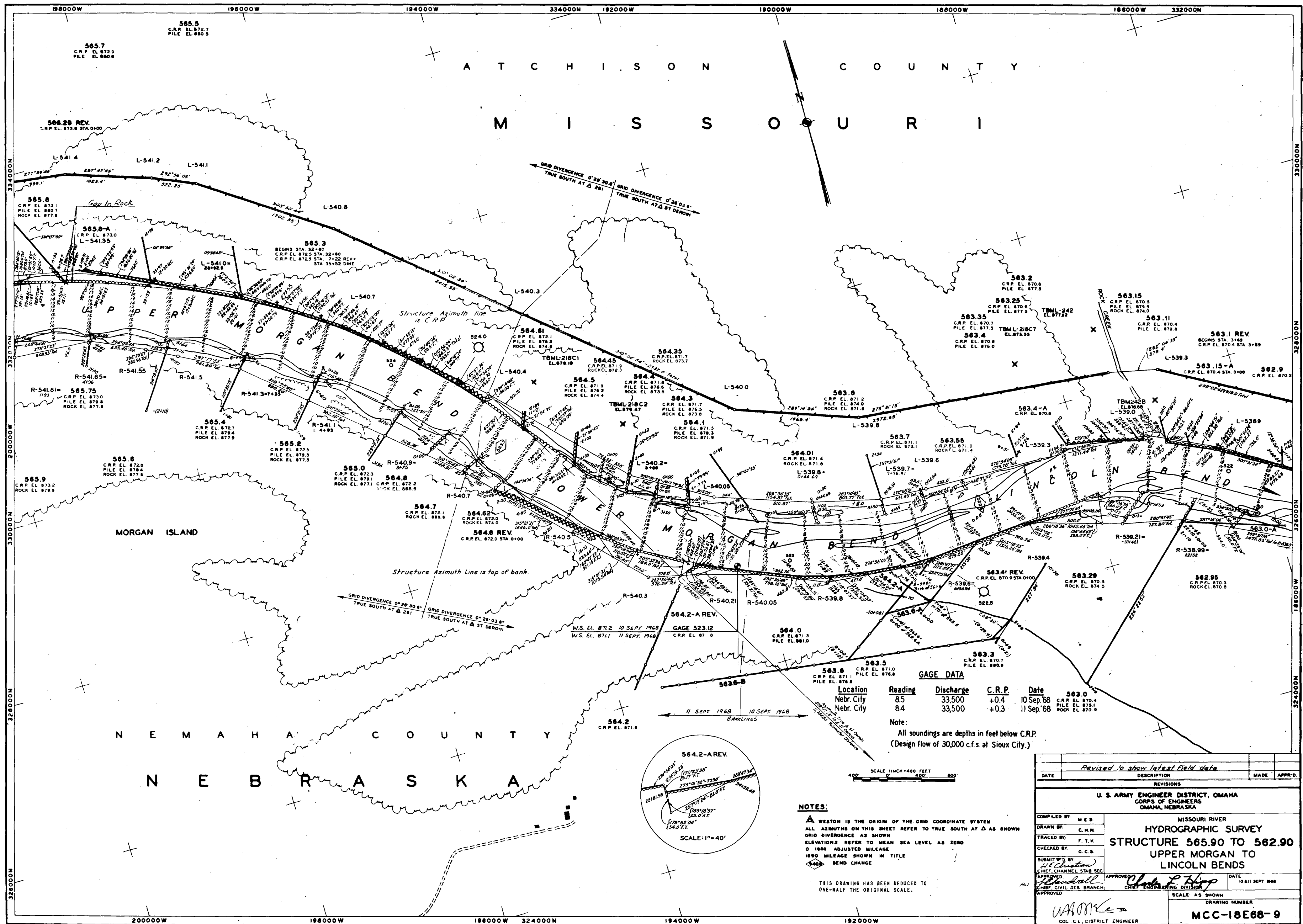


A T C H I S O N
C O U N T Y
M I S S O U R I

N E M A H A
C O U N T Y
N E B R A S K A

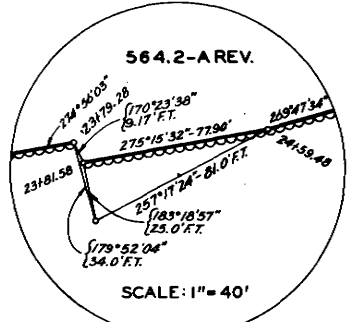


GAGE DATA				
Location	Reading	Discharge	C.R.P.	Date
Nebr. City	8.5	33,500	+0.4	10 Sep '68
Nebr. City	8.4	33,500	+0.3	11 Sep '68

Note:
All soundings are depths in feet below C.R.P.
(Design flow of 30,000 c.f.s. at Sioux City.)

NOTES:
 A WESTON IS THE ORIGIN OF THE GRID COORDINATE SYSTEM
 ALL AZIMUTHS ON THIS SHEET REFER TO TRUE SOUTH AT Δ AS SHOWN
 GRID DIVERGENCE AS SHOWN
 ELEVATIONS REFER TO MEAN SEA LEVEL AS ZERO
 0 1980 ADJUSTED MILEAGE
 1890 MILEAGE SHOWN IN TITLE
 Δ BEND CHANGE

THIS DRAWING HAS BEEN REDUCED TO
ONE-HALF THE ORIGINAL SCALE.



Revised to show latest field data		DATE	DESCRIPTION	MADE	APPR'D.
REVISIONS					
U. S. ARMY ENGINEER DISTRICT, OMAHA CORPS OF ENGINEERS OMAHA, NEBRASKA					
MISSOURI RIVER HYDROGRAPHIC SURVEY STRUCTURE 565.90 TO 562.90 UPPER MORGAN TO LINCOLN BENDS					
COMPILED BY:	M.E.B.	DRAWN BY:	C.H.M.	TRACED BY:	F.T.V.
CHECKED BY:	G.C.S.	SUBMITTED BY:	H.E. Christian	APPROVED:	DATE
CHIEF CHANNEL STAB SEC		CHIEF ENGINEERING DIVISION		10/11 SEPT 1968	
APPROVED: <i>W.A. ...</i>				SCALE: AS SHOWN	
COL. C.L. DISTRICT ENGINEER				DRAWING NUMBER	
				MCC-18E68-9	