

NOTE:

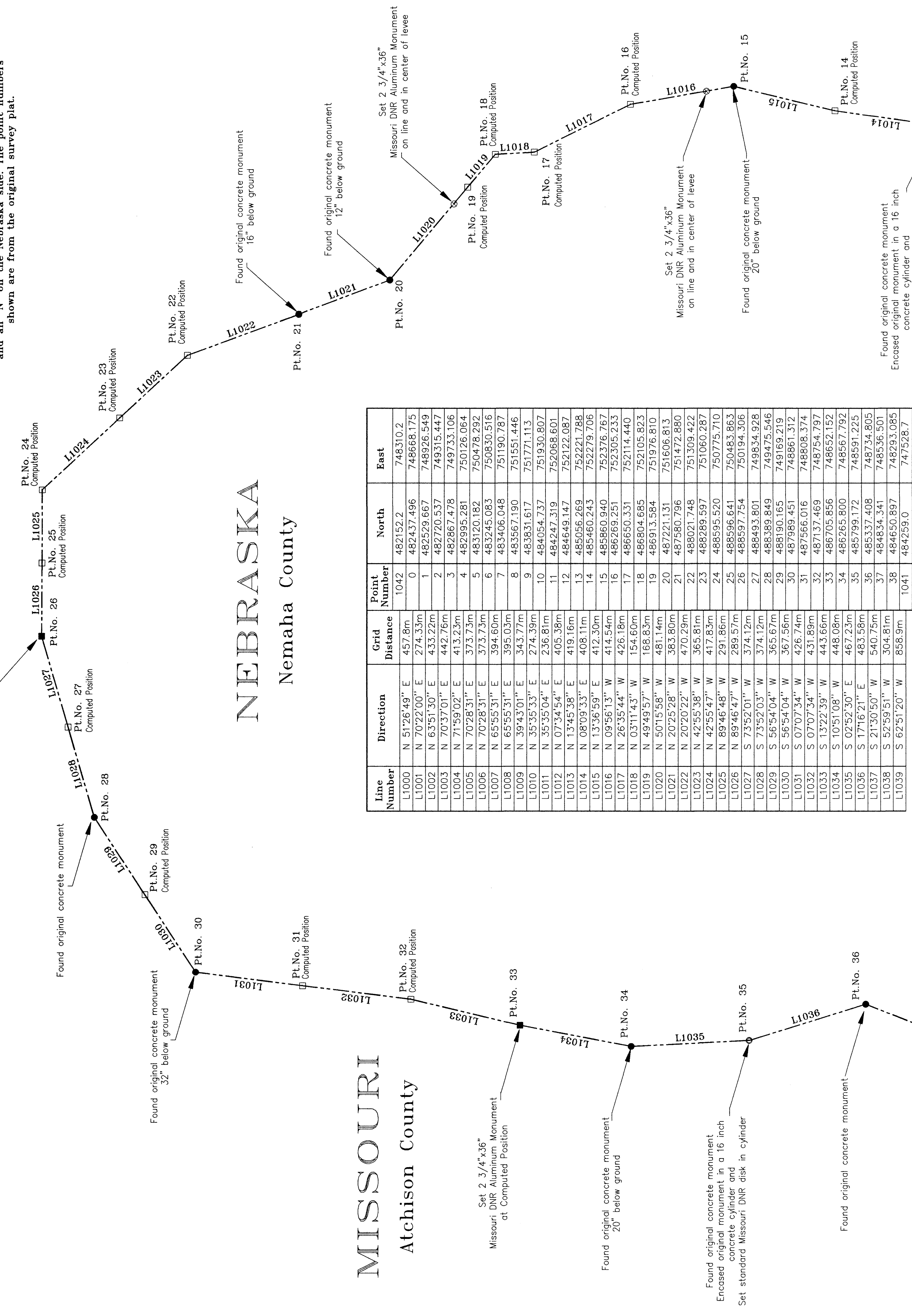
The original monuments were set in 1905 for a survey by the United States Supreme Court. The monuments are 8' x 8' x 5' with a 2 1/4" x 2 1/4" angle iron in the center. The monuments have an "M" on the Missouri side and an "N" on the Nebraska side. The point numbers shown are from the original survey plat.

Set 2 3/4" x 36" Missouri DNR Aluminum Monument at Computed Position

Set 2 3/4" x 36" Missouri DNR Aluminum Monument at Computed Position

Set 2 3/4" x 36" Missouri DNR Aluminum Monument at Computed Position

Set 2 3/4" x 36" Missouri DNR Aluminum Monument at Computed Position



NEBRASKA
Nemaha County

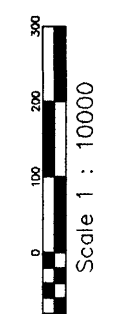
MISSOURI
Atchison County

McKissick's
Island

NEBRASKA
Nemaha County

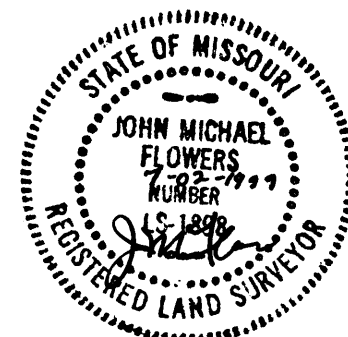
MISSOURI
Atchison County

Line Number	Direction	Grid Distance	Point Number	North	East
L1000	N 51°26'49" E	457.8m	1042	482152.2	748310.2
L1001	N 70°22'00" E	274.33m	0	482337.496	7486681.175
L1002	N 63°51'30" E	433.22m	1	482529.667	748926.549
L1003	N 70°37'01" E	442.76m	2	482720.537	749315.447
L1004	N 71°59'02" E	413.23m	3	482867.478	749733.106
L1005	N 70°28'31" E	373.75m	4	482995.291	750126.064
L1006	N 70°28'31" E	373.75m	5	48320.162	750478.292
L1007	N 68°55'31" E	394.60m	6	483245.083	750850.576
L1008	N 68°55'31" E	394.60m	7	483406.048	751190.787
L1009	N 39°43'01" E	343.77m	8	483567.190	751551.446
L1010	N 35°35'33" E	274.39m	9	483631.617	751771.113
L1011	N 35°35'04" E	274.39m	10	484054.737	751930.807
L1012	N 07°34'54" E	405.38m	11	484247.319	752068.601
L1013	N 13°45'38" E	419.16m	12	484549.147	752122.087
L1014	N 08°09'33" E	408.11m	13	485056.269	752221.788
L1015	N 13°36'39" E	412.30m	14	485460.243	752279.706
L1016	N 09°56'13" W	414.54m	15	485860.940	752376.767
L1017	N 26°35'43" W	426.18m	16	486269.251	752305.233
L1018	N 03°11'45" W	154.60m	17	486650.331	752114.440
L1019	N 49°49'57" W	168.83m	18	486604.685	752105.823
L1020	N 50°15'35" W	481.14m	19	486913.584	751976.810
L1021	N 20°25'22" W	383.60m	20	487221.131	751606.813
L1022	N 42°55'38" W	470.29m	21	487580.796	751472.880
L1023	N 42°55'38" W	365.81m	22	488021.748	751060.287
L1024	N 42°55'38" W	417.83m	23	488595.520	750775.710
L1025	N 89°46'47" W	291.86m	24	488956.641	750483.863
L1026	N 89°46'47" W	289.57m	25	488997.754	750194.306
L1027	S 73°52'03" W	374.12m	26	488997.754	750194.306
L1028	S 58°54'04" W	365.67m	27	488493.801	749875.546
L1029	S 58°54'04" W	367.56m	28	488190.165	749169.219
L1030	S 07°07'34" W	426.74m	29	487980.451	748861.312
L1031	S 07°07'34" W	426.74m	30	487566.016	748808.374
L1032	S 13°22'39" W	443.66m	31	487137.469	748764.797
L1033	S 10°51'08" W	448.08m	32	486705.856	748652.152
L1034	S 02°52'30" E	467.23m	33	486265.800	748567.792
L1035	S 17°16'21" E	483.56m	34	485795.172	748591.225
L1036	S 21°30'50" W	540.75m	35	485337.408	748734.805
L1037	S 52°59'51" W	304.81m	36	484834.341	748536.501
L1038	S 62°51'20" W	858.9m	37	484650.897	748293.095
L1039	S 62°51'20" W	858.9m	1041	484259.0	747528.7



LEGEND

- Missouri - Nebraska Compromise Boundary Line
- Calculated Points on Centerline of Design Channel
- Points on edge of Design Channel
- NGS Horizontal Control Points
- Approximate River Miles
- Boundary Line of McKissick's Island
- Found Original Concrete Monument
- Set Standard Missouri DNR Aluminum Disk in 16" diameter cylinder encasing Original Found Concrete Monument
- Set 2 3/4" x 36" Missouri DNR Aluminum Monument at Computed Location
- Computed Position
- Set Missouri DNR Aluminum Monument as a Line Monument set in Center of Levee



DRAWN BY: Bruce L. Wilson Eng. Tech. III
DATE: May 17, 1999
DWG. NO. F:\mo-neb\dwgsp\isle\isle.dwg

Scale: 1cm = 100m
Datum: NAD83
Missouri State Plane, west zone

REVISIONS

Missouri Department of Natural Resources
Division of Geology and Land Survey
Land Survey Program
P.O. Box 250, Rolla MO 65402-0250

PROJECT
Missouri-Nebraska Boundary Compact Map

SHT. NAME
Detail of McKissick's Island

SHT. NO.
11 of 12