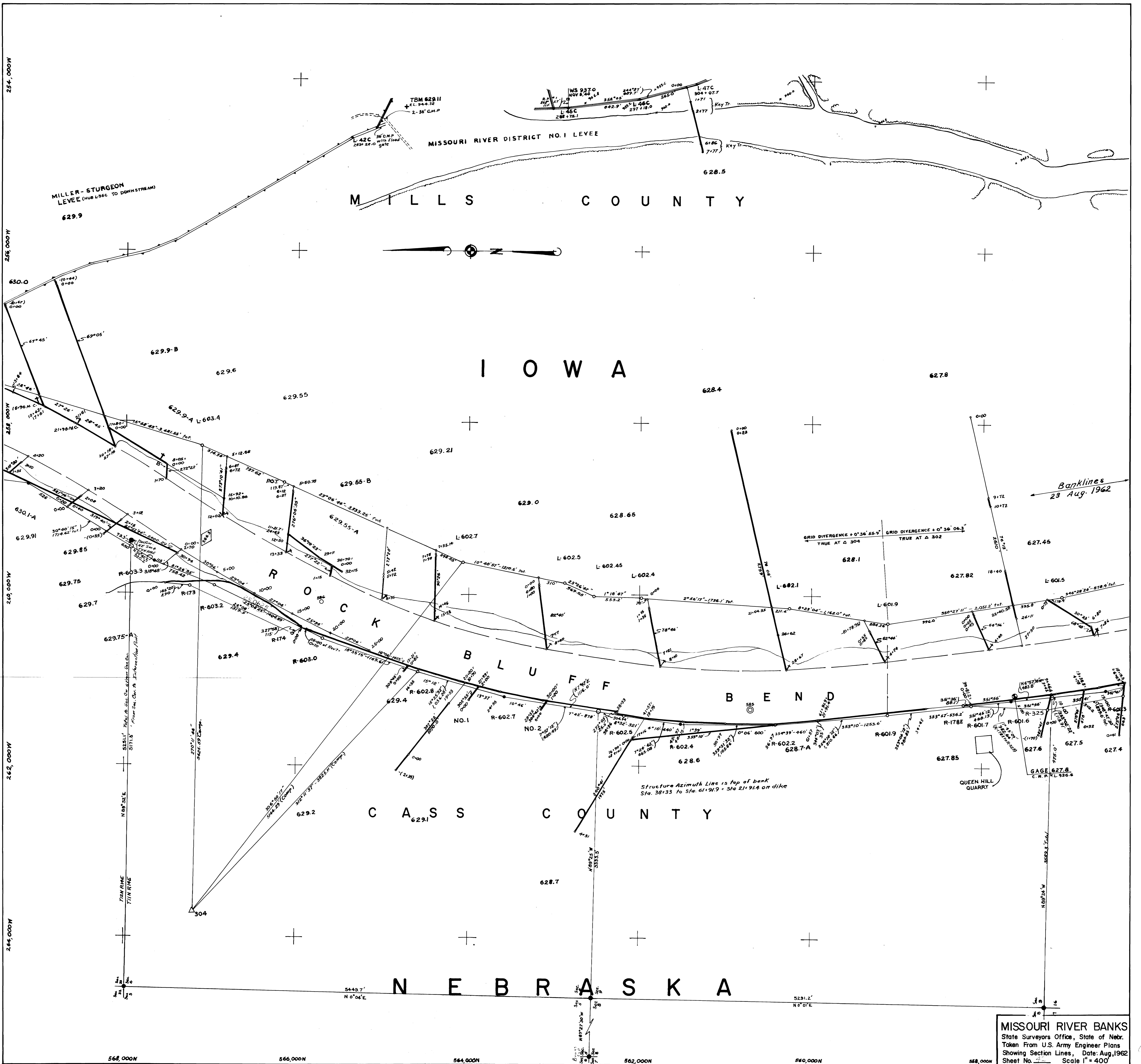


MISSOURI RIVER BANKS  
 State Surveyors Office, State of Nebr.  
 Taken From U.S. Army Engineer Plans  
 Showing Section Lines, Date: Aug. 1962  
 Sheet No. 22 Scale 1" = 400'



MILLER-STURGEON  
LEVEE (HUB L36C TO DOWNSTREAM)  
629.9

MISSOURI RIVER DISTRICT NO. 1 LEVEE

M I L L S C O U N T Y

I O W A

C A S S C O U N T Y

N E B R A S K A



Banklines  
23 Aug. 1962

GRID DIVERGENCE + 0° 36' 55" TRUE AT Δ 304  
GRID DIVERGENCE + 0° 36' 06" TRUE AT Δ 302

Structure Azimuth Line is top of bank  
Sta. 361.33 to Sta. 6191.9 - Sta. 2191.4 on dike

MISSOURI RIVER BANKS  
State Surveyors Office, State of Nebr.  
Taken From U.S. Army Engineer Plans  
Showing Section Lines, Date: Aug. 1962  
Sheet No. 4 Scale 1" = 400'

