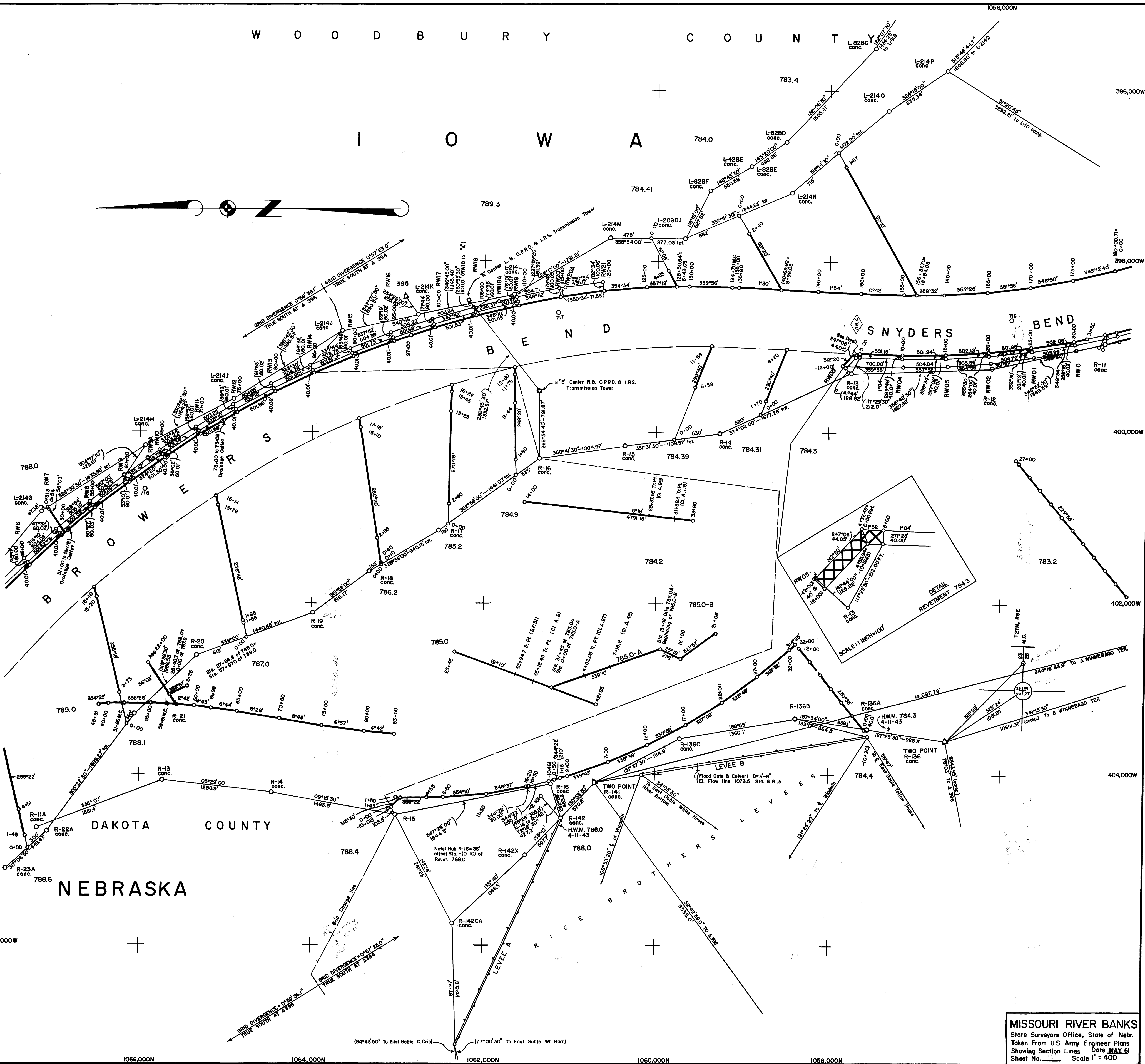
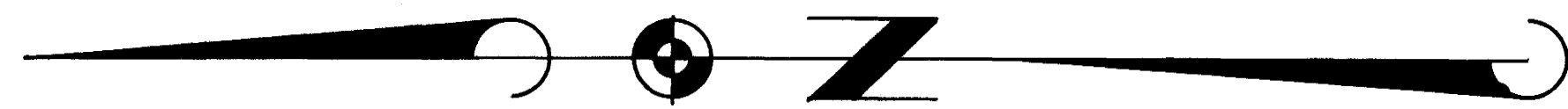


W O O D B U R Y C O U N T Y

I O W A

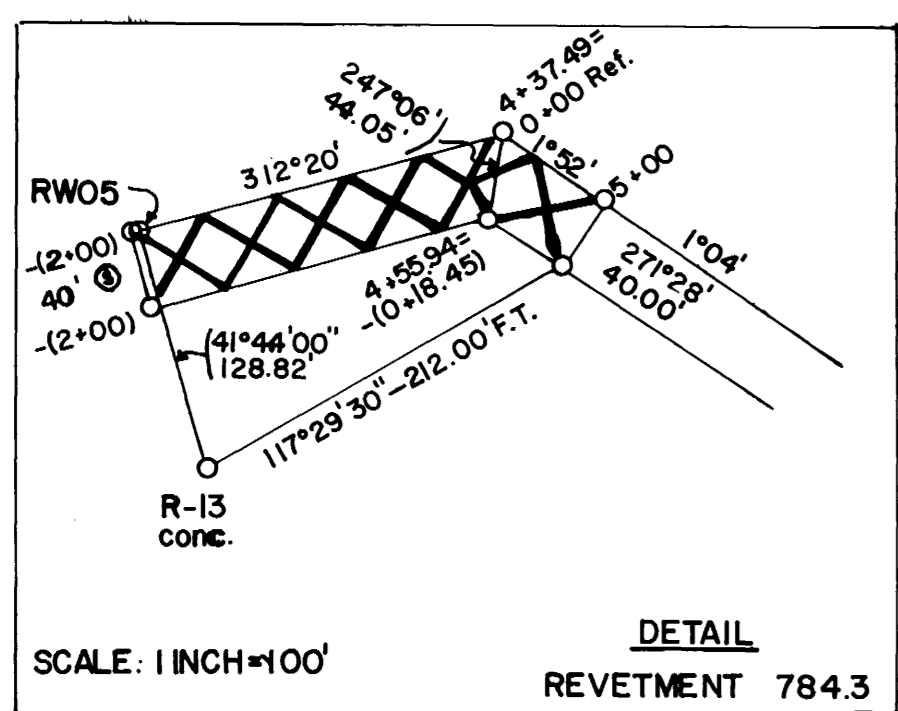


DAKOTA COUNTY  
NEBRASKA

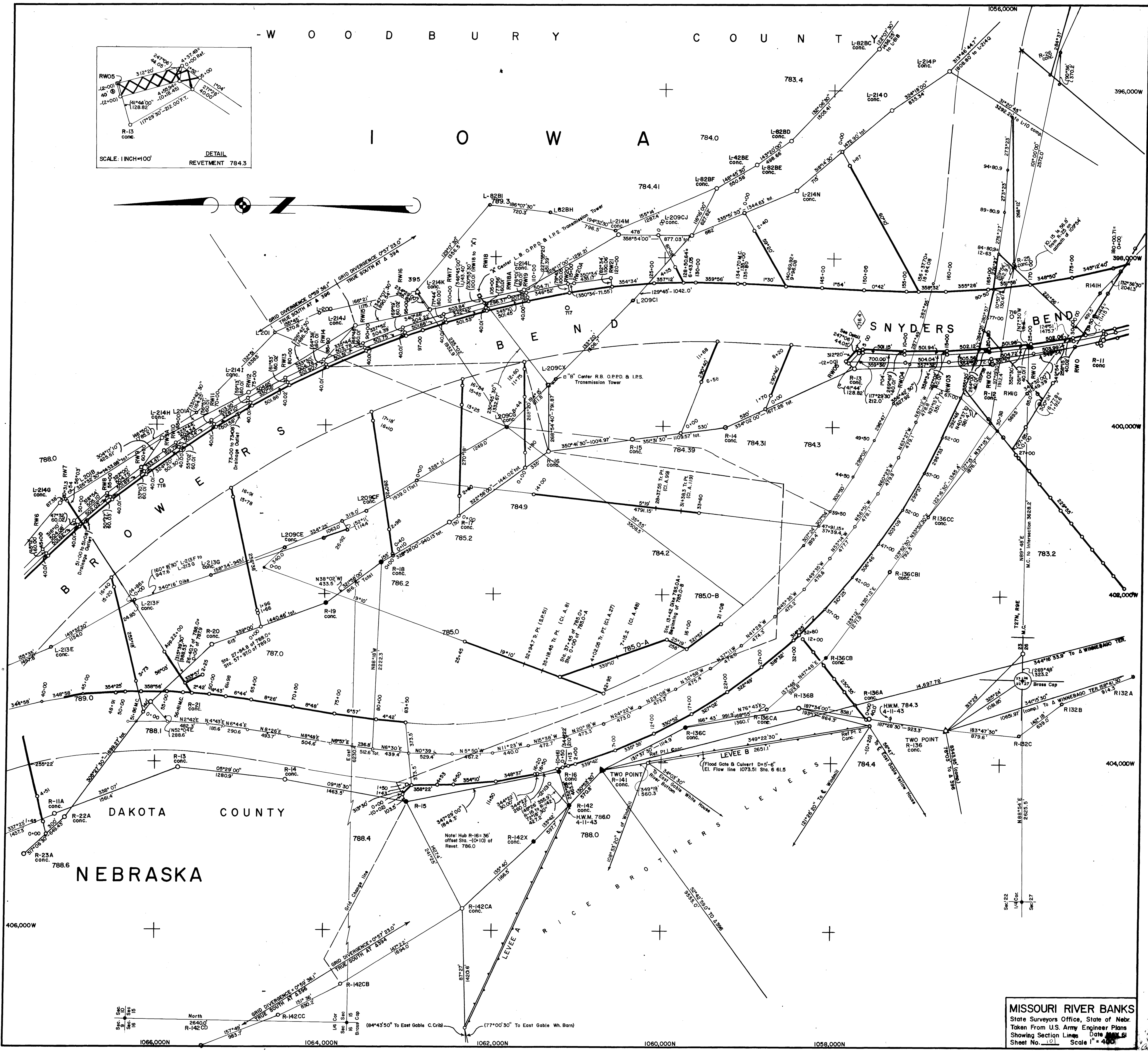
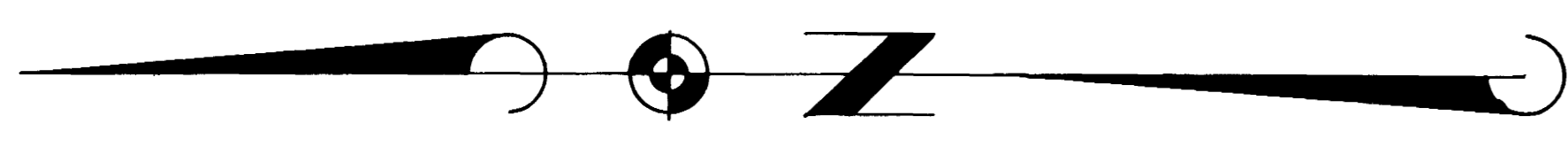
MISSOURI RIVER BANKS  
State Surveyors Office, State of Neb.  
Taken From U.S. Army Engineer Plans  
Showing Section Lines Date MAY 51  
Sheet No. \_\_\_\_\_ Scale 1" = 400'

WOODBURY COUNTY

LOWA



SCALE: 1/4"=100' DETAIL REVETMENT 784.3



MISSOURI RIVER BANKS  
State Surveyors Office, State of Nebr.  
Taken From U.S. Army Engineer Plans  
Showing Section Lines Date 1895  
Sheet No. 121 Scale 1" = 400'

