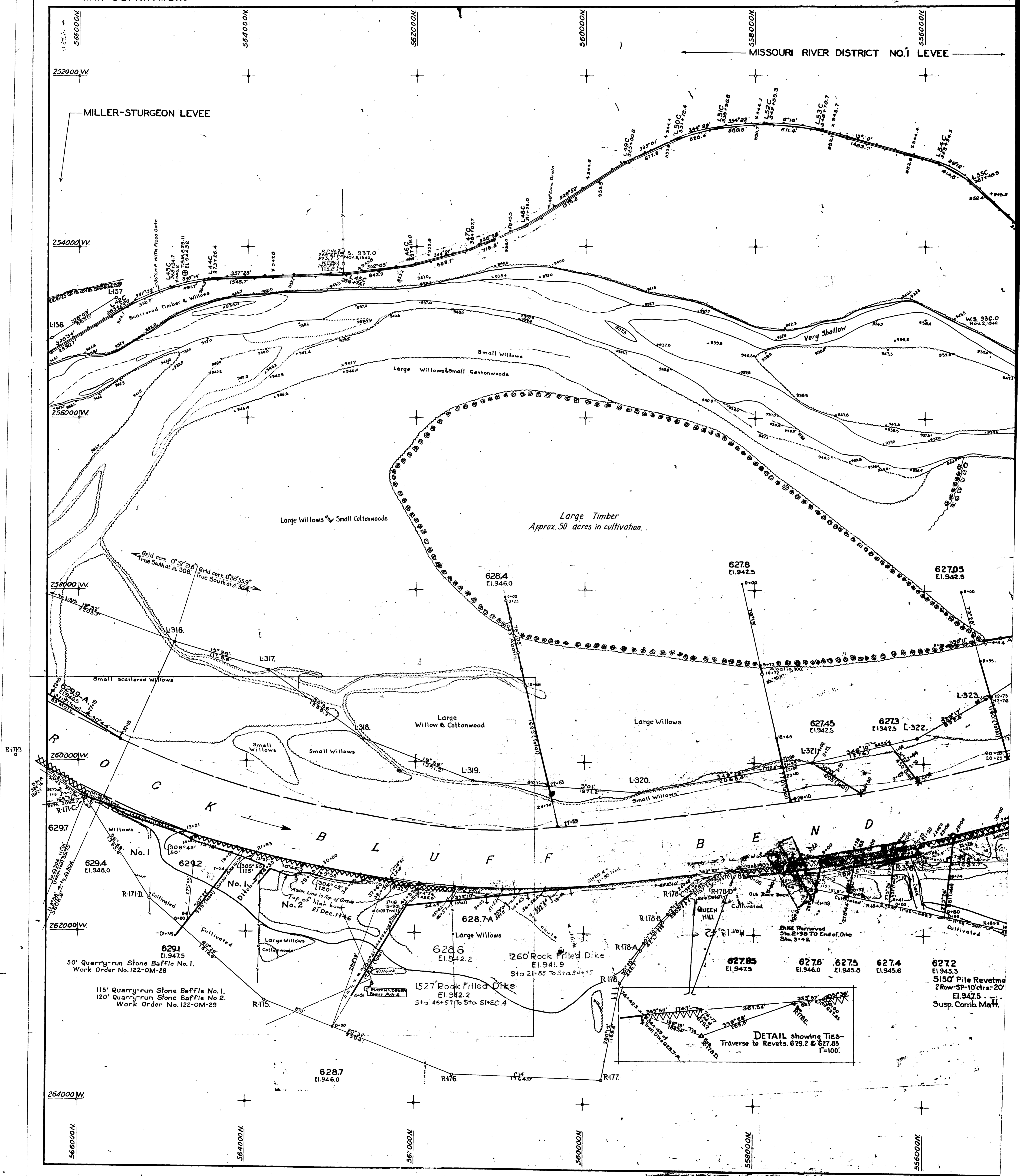


WAR DEPARTMENT

MISSOURI RIVER DISTRICT NO. 1 LEVEE

MILLER-STURGEON LEVEE



Grid corr. $0^{\circ}37'21.6''$ True South at $\Delta 306$
 Grid corr. $0^{\circ}36'55.9''$ True South at $\Delta 304$

Large Timber
 Approx. 50 acres in cultivation.

627.8
 El. 942.5

627.05
 El. 942.5

628.4
 El. 946.0

627.45
 El. 942.5

627.3
 El. 942.5

629.4
 El. 948.0

629.1
 El. 947.5
 50' Quarry-run Stone Baffle No. 1.
 Work Order No. 122-OM-28

115' Quarry-run Stone Baffle No. 1.
 120' Quarry-run Stone Baffle No. 2.
 Work Order No. 122-OM-29

628.6
 El. 942.2
 1260' Rock Filled Dike
 El. 941.9
 Sta. 21+85 To Sta. 34+15

1527' Rock Filled Dike
 El. 942.2
 Sta. 45+57 To Sta. 61+50.4

627.85
 El. 947.5

627.6
 El. 946.0

627.5
 El. 945.6

627.4
 El. 945.6

627.2
 El. 945.3

5150' Pile Revetment
 2 Row-SP-10' ctrs-20'
 El. 947.5
 Susp. Comb. Matf.

DETAIL showing TIES
 Traverse to Revets. 629.2 & 627.85
 1"=100'