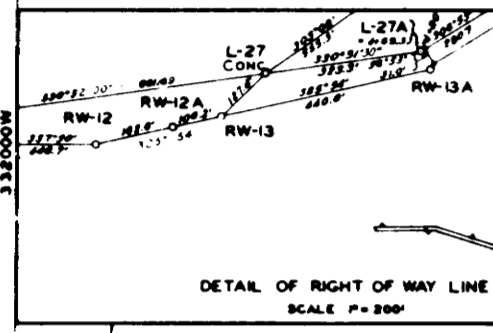
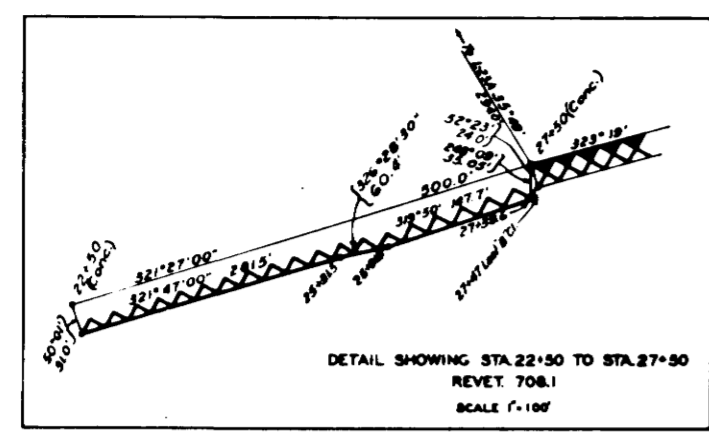
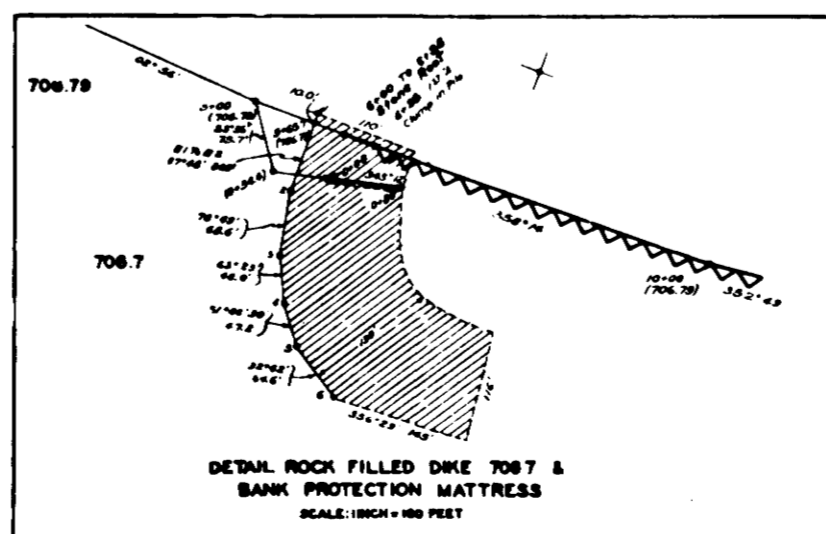
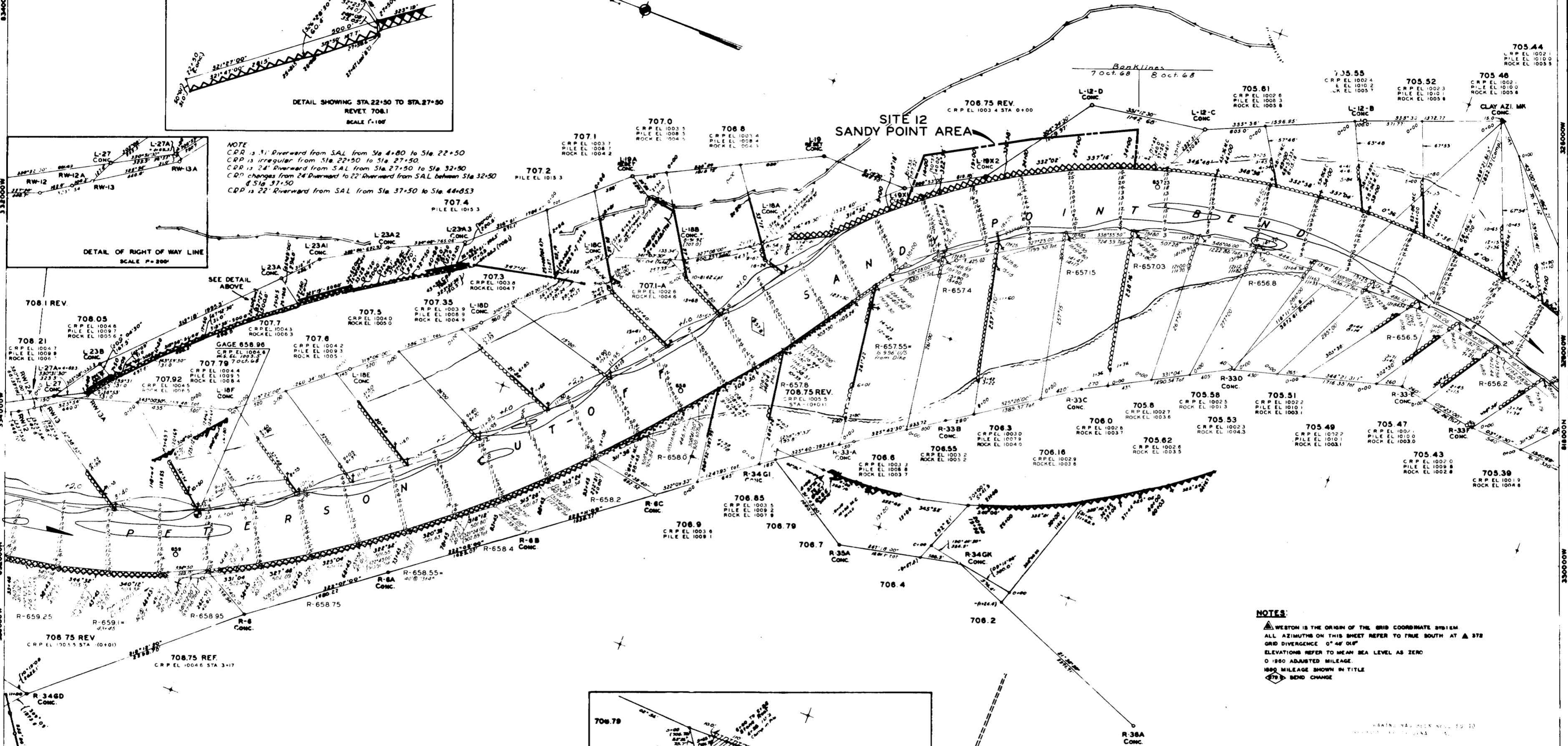


HARRISON COUNTY IOWA



NOTE  
CRR is 31' Riverward from SAL from Sta 4+80 to Sta 22+50  
CRR is irregular from Sta 22+50 to Sta 27+50  
CRR is 24' Riverward from SAL from Sta 27+50 to Sta 32+50  
CRR changes from 24' Riverward to 22' Riverward from SAL between Sta 32+50 & Sta 37+50  
CRR is 22' Riverward from SAL from Sta 37+50 to Sta 44+85.3



NOTES:  
WESTON IS THE ORIGIN OF THE GRID COORDINATE SYSTEM  
ALL AZIMUTHS ON THIS SHEET REFER TO TRUE SOUTH AT A 378  
GRID DIVERGENCE 0° 44' 00"  
ELEVATIONS REFER TO MEAN SEA LEVEL AS ZERO  
0.180 ADJUSTED MILEAGE  
1800 MILEAGE SHOWN IN TITLE  
STB BEND CHANGE

GAGE DATA

Location	Reading	Discharge	C.R.P.	Date
Decatur	5.9	32,500	-0.9	7 Oct 68
Decatur	5.9	32,500	-0.9	8 Oct 68

Note:  
All soundings are depths in feet below C.R.P.  
(Design flow of 30,000 c.f.s. at Sioux City.)

U. S. ARMY ENGINEER DISTRICT, OMAHA  
CORPS OF ENGINEERS  
OMAHA, NEBRASKA

MISSOURI RIVER  
HYDROGRAPHIC SURVEY  
STRUCTURE 708.21 TO 705.43  
PETERSON CUT-OFF AND  
SANDY POINT BEND

COMPILED BY: G.W.H.  
DRAWN BY: G.W.H.  
TRACED BY: G.W.H.  
CHECKED BY: G.C.S.  
SUBMITTED BY: [Signature]  
CHIEF, CHANNEL STAB. SEC.  
APPROVED: [Signature]  
CHIEF, CIV. ENGR. BRANCH

DATE: 7 & 8 OCT 1968

SCALE: 1"=400 FEET  
DRAWING NUMBER: MCC-18E68-55

DATE	DESCRIPTION	BY	APPROVED
	Revised to show latest field data		