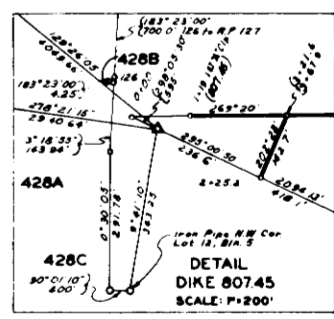


**GAGE DATA**

Location	Reading	Discharge	C.R.P.	Date
Sioux City	3.0	31,000	-1.0	10 Sep '68

Note:  
All soundings are depths in feet below C.R.P.  
(Design flow of 30,000 c.f.s. at Sioux City.)

THIS DRAWING HAS BEEN REDUCED TO ONE-HALF THE ORIGINAL SCALE.



SCALE 1 INCH = 400 FEET

**NOTE:**  
EMERSON IS THE ORIGIN OF THE GRID COORDINATE SYSTEM  
ALL READINGS ON THIS SHEET REFER TO "N" SOUTH AT EMERSON  
GRID DIVERGENCE 0.0000"  
ELEVATIONS REFER TO MEAN SEA LEVEL AS ZERO  
© 1960 ADJUSTED MILEAGE  
1960 MILEAGE SHOWN IN TITLE  
© 500' BEND CHANGE

Revised to show latest field data			
DATE	DESCRIPTION	MADE	APPR'D
REVISIONS			
U. S. ARMY ENGINEER DISTRICT, OMAHA CORPS OF ENGINEERS OMAHA, NEBRASKA			
COMPILED BY: M.E.B.	MISSOURI RIVER HYDROGRAPHIC SURVEY		
DRAWN BY: C.H.N.	STRUCTURE 813.6 TO 807.4		
TRACED BY: M.C.L.	UPPER SIOUX CITY BEND & LOWER SIOUX CITY BEND		
CHECKED BY: G.C.S.	DATE: 10 SEPT 1968		
APPROVED: <i>Charles L. Bopp</i>	CHIEF ENGINEERING DIVISION		
SCALE AS SHOWN		DRAWING NUMBER	
MCC-18E68-84			

MILE 735.2 TO 732.3 (1960)