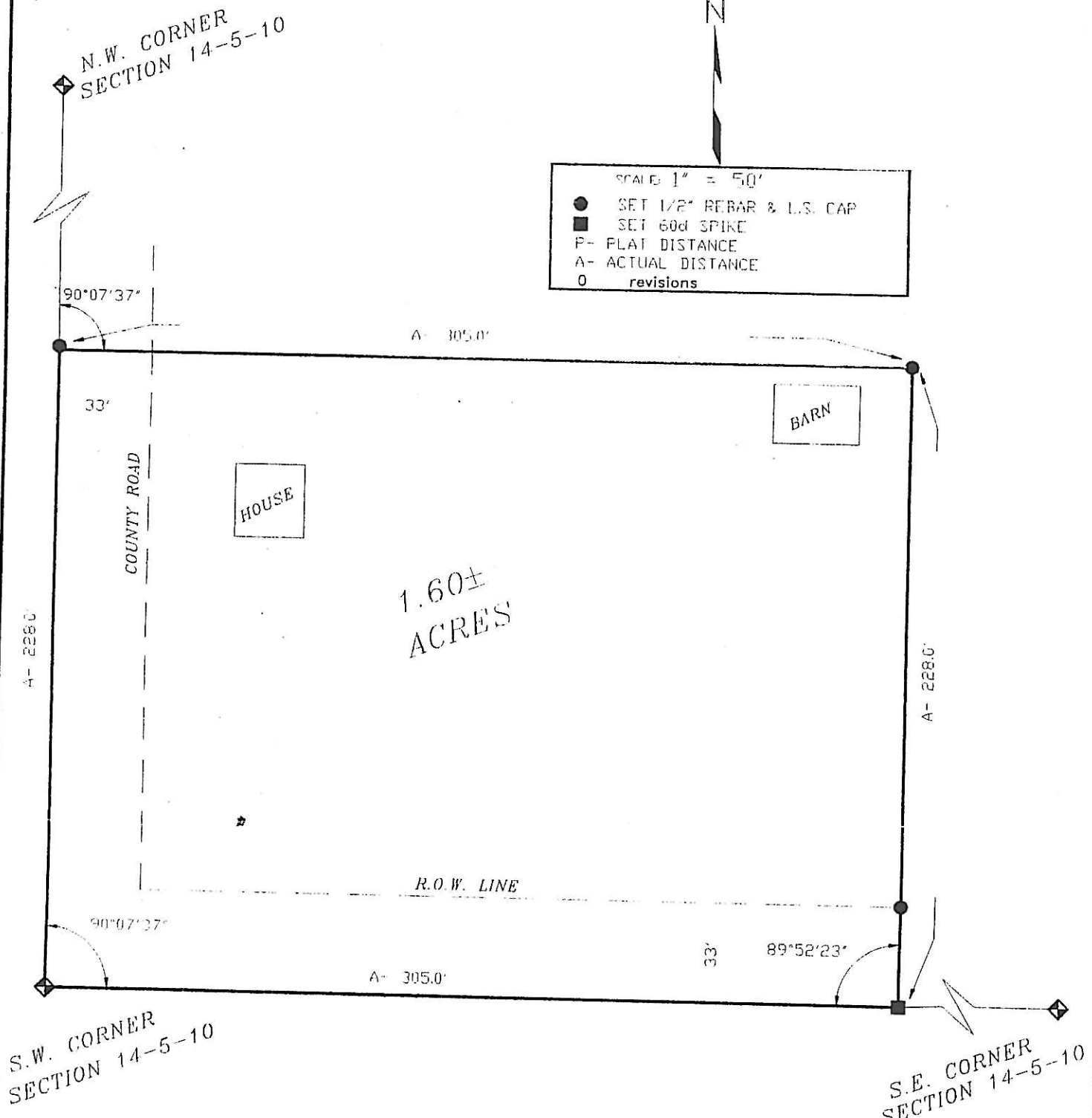


A SURVEY PLAT OF
THE SOUTH 228 FEET OF THE WEST 305 FEET OF THE
S.W. 1/4 OF THE S.W. 1/4 OF SECTION 14, T.5N., R.10E.,
OF THE 6th P.M., JOHNSON COUNTY, NEBRASKA



SCALE 1" = 50'
 ● SET 1/2" REBAR & L.S. CAP
 ■ SET 60d SPIKE
 P- PLAT DISTANCE
 A- ACTUAL DISTANCE
 0 revisions

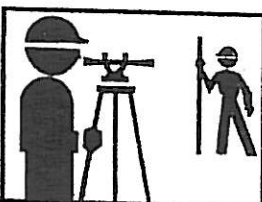
N.W. CORNER SECTION 14-5-10
 FD. 1" x 1/4" IRON BAR 6" DEEP
 N. 11.44' TO 60d SPIKE IN TOP END PILING
 S.S.W. 12.03' TO 60d SPIKE IN TOP END PILING
 W. 5.0' TO EAST EDGE BRIDGE DECK
 E. 33.15' TO 3/4" PIPE W.C.

S.W. CORNER SECTION 14-5-10
 FD. JOHNSON COUNTY CAP
 N.W. 48.93' TO 60d SPIKE IN TOP CFP
 N.E. 47.16' TO TAGGED NAIL IN TEL-WARN POST
 S.E. 52.17' TO 60d SPIKE IN CFP
 S.W. 43.8' TO SPIKE STEP IN P.P.
 E. 5' TO ϕ ROAD NORTH
 E. 37.5' TO FENCE LINE SOUTH

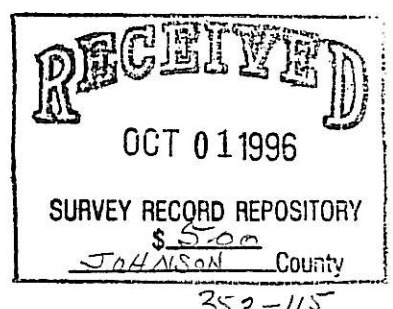
S.E. CORNER SECTION 14-5-10
 FOUND SPIKE IN 1" PIPE
 S.W. 47.15' TO TAGGED NAIL IN TEL-WARN POST
 S.W. 44.55' TO TAGGED NAIL IN P.P.
 S.E. 37.25' TO TAGGED NAIL IN CFP
 S.E. 38.5' TO EDGE TEL-WARNING POST
 W. 33' TO POWER LINE SOUTH

SURVEYOR'S CERTIFICATE

I hereby certify that, under my personal supervision, this legal survey plat was prepared from an actual survey completed this 12th day of June, 1996, and is correct to the best of my knowledge.



SCHMITZ
 LAND
 SURVEYING
 NEBRASKA CITY, NE
 DRAWN BY Charles Vryt



David Schmitz
 David L. Schmitz, Registered Land Surveyor
 Nebraska Reg. No. 391