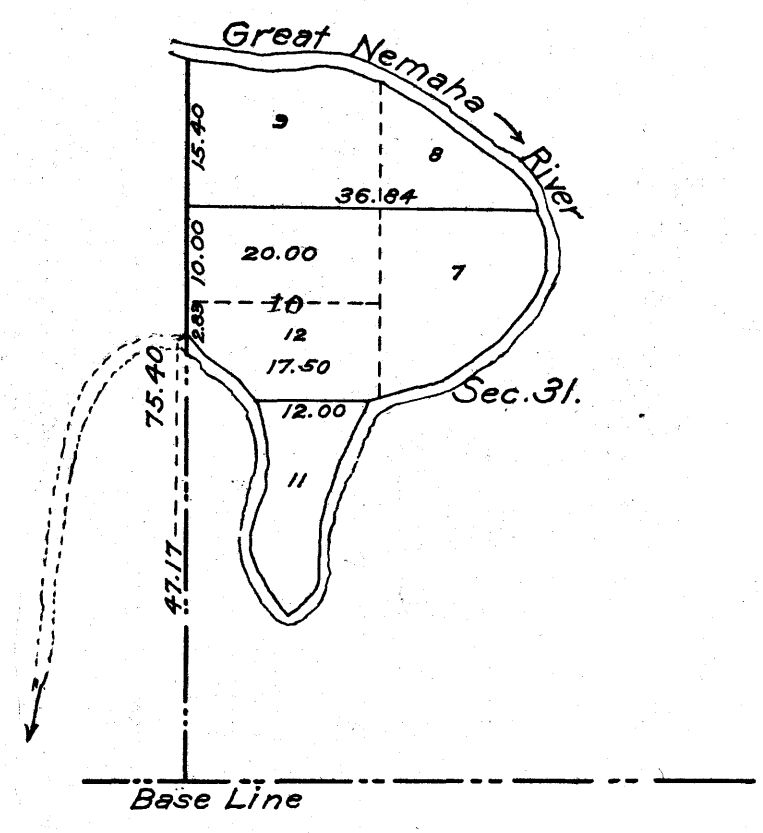


Recd and filed May 31 1916. Fred Beckmann Com. P.S. Co.  
By Robert Harvey - State Surveyor

**SUPPLEMENTAL PLAT**  
of section 31, T. 1 N., R. 18 E., 6<sup>th</sup> P.M.,  
**NEBRASKA.**

Scale: 20 chains to an inch.



Department of the Interior,  
General Land Office,  
Washington, D.C., May 5, 1916.

This supplemental plat showing the subdivision of lot 10, plat approved January 14, 1873, section 31, T. 1 N., R. 18 E., 6<sup>th</sup> P.M., Nebraska, is made for the purpose of obtaining the area and legal description of the subdivisions thereof, to accommodate Kickapoo allotment No. 82, of Charles M. Connell, which embraces the south 27.50 acres of said lot 10; and is hereby approved.

Commissioner and ex officio  
U. S. Surveyor General for Nebraska.