

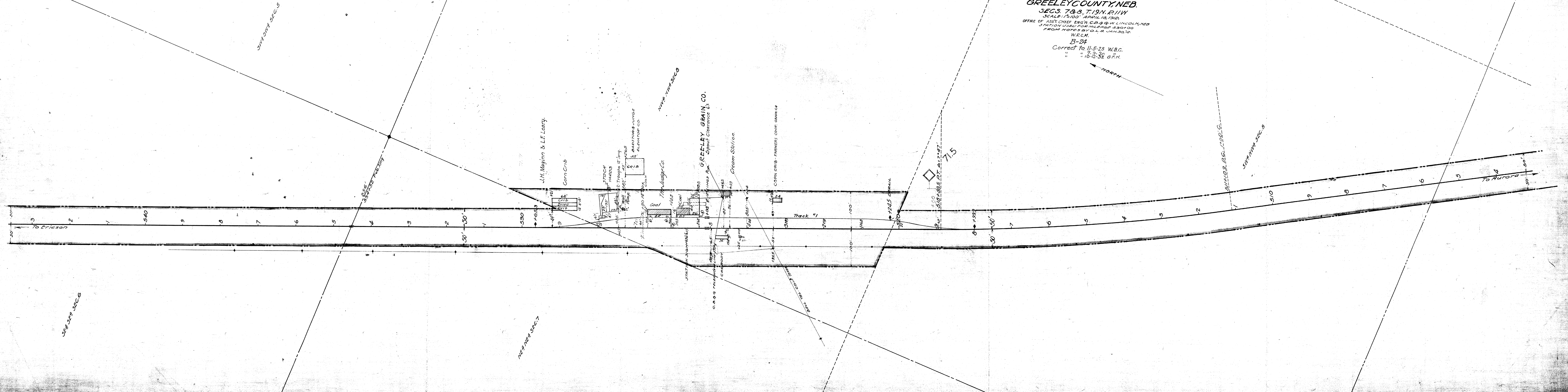
BELFAST
GREELEY COUNTY, NEB.

SECS. 7 & 8, T. 19 N. R. 11 W.
 SCALE: 1" = 100' APRIL 18, 1912.
 OFFICE OF ASST. CHIEF ENGR. C.D. & G.W. LINGOLN, NEB.
 STATION USED FOR MILEAGE 5301.00
 FROM NOTES BY O.L.B. JAN 30, '12.
 W.R.C.M.
 B-24
 Correct to 11-5-25 W.B.C.
 " 7-3-30 "
 " 10-12-32 G.F.H.

NORTH

BELFAST B-24

BELFAST B-24



544 SEC. 8

547 SEC. 7

SOUTH BELFAST SEC. 8

549 SEC. 8

71.5

Track #1

GREELEY GRAIN CO.
Spout Clearance 6'

Cream Station

J.H. Maginn & L.F. Leary
Corn Crib

STOCY
64 CRIB
DRIVE
CRIB

STA. 1201
1202
1203
1204
1205
1206
1207
1208
1209
1210
1211
1212
1213
1214
1215
1216
1217
1218
1219
1220
1221
1222
1223
1224
1225
1226
1227
1228
1229
1230
1231
1232
1233
1234
1235
1236
1237
1238
1239
1240
1241
1242
1243
1244
1245
1246
1247
1248
1249
1250
1251
1252
1253
1254
1255
1256
1257
1258
1259
1260
1261
1262
1263
1264
1265

Coal

CORN CRIB - FARMERS COOP. GRAIN CO.

To Ericson

To Aurora