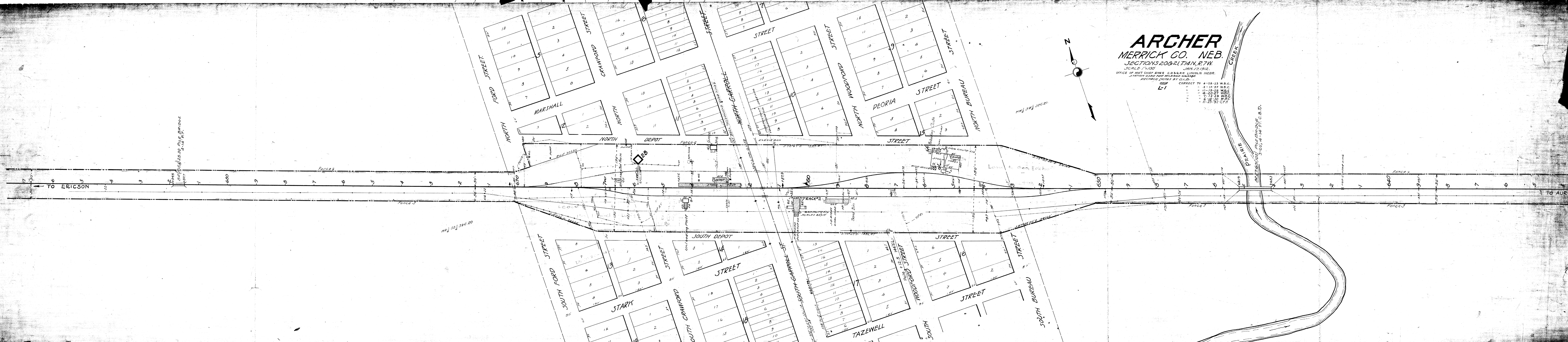


ALCASA 111

10945  
10946  
10947  
10948  
10949  
10950  
10951  
10952  
10953  
10954  
10955  
10956  
10957  
10958  
10959  
10960  
10961  
10962  
10963  
10964  
10965  
10966  
10967  
10968  
10969  
10970  
10971  
10972  
10973  
10974  
10975  
10976  
10977  
10978  
10979  
10980  
10981  
10982  
10983  
10984  
10985  
10986  
10987  
10988  
10989  
10990  
10991  
10992  
10993  
10994  
10995  
10996  
10997  
10998  
10999  
11000

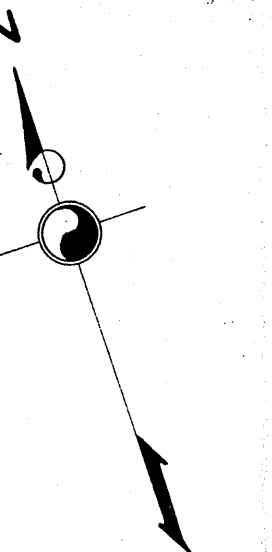
2830 FILE BRIDGE  
4-15 FT.



**ARCHER**  
MERRICK CO. NEB.  
SECTIONS 20&21, T14N, R7W.

SCALE 1"=100' JAN. 17, 1912.  
OFFICE OF ASST. CHIEF ENGR. C.B. & Q.R.R. LINCOLN NEBR.  
STATION USED FOR MILEAGE 663.90  
CHECKED NOTES BY C.L.B.  
L-1

100	CORRECT TO	4-28-23 W.B.C.
L-1		4-15-25 W.B.C.
		10-15-25 W.B.C.
		4-20-27 W.B.C.
		7-12-28 W.B.C.
		6-28-30 W.B.C.
		11-23-32 C.F.H.



HWY SW 1/2 SEC. 21

3-20; 4-14 FT. C.B.D.

TO AURORA

TO ERICSON

112 561 560 20

TRACK #2

SOUTH FORD STREET

SOUTH CRAWFORD STREET

START

SOUTH GARROLL ST

TAZEWELL STREET

WOODFORD STREET

WOODFORD STREET

WOODFORD STREET

WOODFORD STREET

SOUTH BUREAU STREET

FORD STREET

NORTH FORD STREET

MARSHALL STREET

NORTH DEPOT STREET

NORTH GARROLL STREET

STREET

NORTH WOODFORD STREET

PEORIA STREET

STREET

NORTH BUREAU STREET

PRAIRIE CREEK