

Appleton A-51

APPLETON

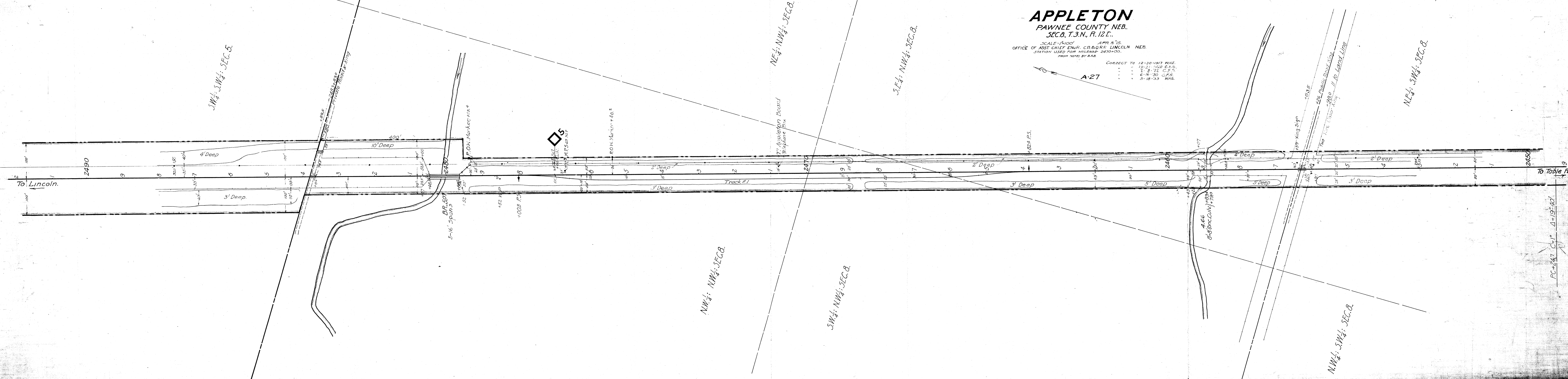
PAWNEE COUNTY NEB.
SEC. 8, T. 3. N., R. 12 E.

SCALE - 1"=100' APR. 8 '15.
OFFICE OF ASST. CHIEF ENGR. C.B. & Q.R.R. LINCOLN NEB.
STATION USED FOR MILEAGE 2470+00.
FROM NOTES BY G.A.B.

CORRECT TO 12-30-1917 W.H.E.

12-30-1917	W.H.E.
12-21-1920	C.F.S.
2-8-22	C.F.S.
6-16-30	C.F.S.
5-18-33	W.H.E.

A-27



SW 1/4, SEC. 8.

NE 1/4, SEC. 8.

SE 1/4, SEC. 8.

NE 1/4, SEC. 8.

NW 1/4, SEC. 8.

SW 1/4, SEC. 8.

NW 1/4, SEC. 8.

To Table Rock

PC+247 C=1' Δ=19°40'

TSA