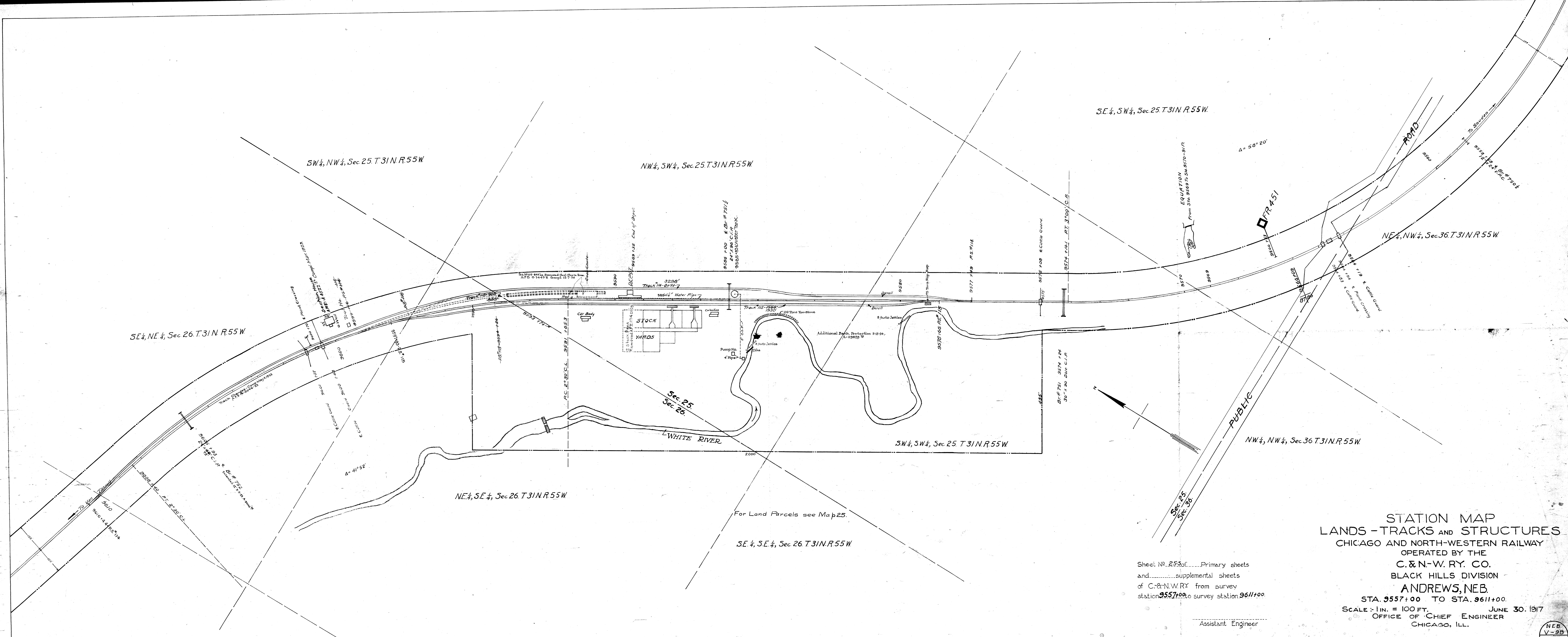


V-11. SEC. NEB. V-9-B. SHEET 10333  
 ANDREWS, NEB. DIV.  
 BLACK HILLS DIV.



For Land Parcels see Map 25.

SE 1/4, SE 1/4, Sec. 26. T. 31 N. R. 55 W.

Sheet No. 253 of Primary sheets  
 and supplemental sheets  
 of C. & N. W. RY. from survey  
 station 9557+00 to survey station 9611+00

Assistant Engineer

**STATION MAP**  
**LANDS - TRACKS AND STRUCTURES**  
 CHICAGO AND NORTH-WESTERN RAILWAY  
 OPERATED BY THE  
**C. & N. W. RY. CO.**  
 BLACK HILLS DIVISION  
**ANDREWS, NEB.**  
 STA. 9557+00 TO STA. 9611+00  
 SCALE: 1 IN. = 100 FT. JUNE 30, 1917  
 OFFICE OF CHIEF ENGINEER  
 CHICAGO, ILL.